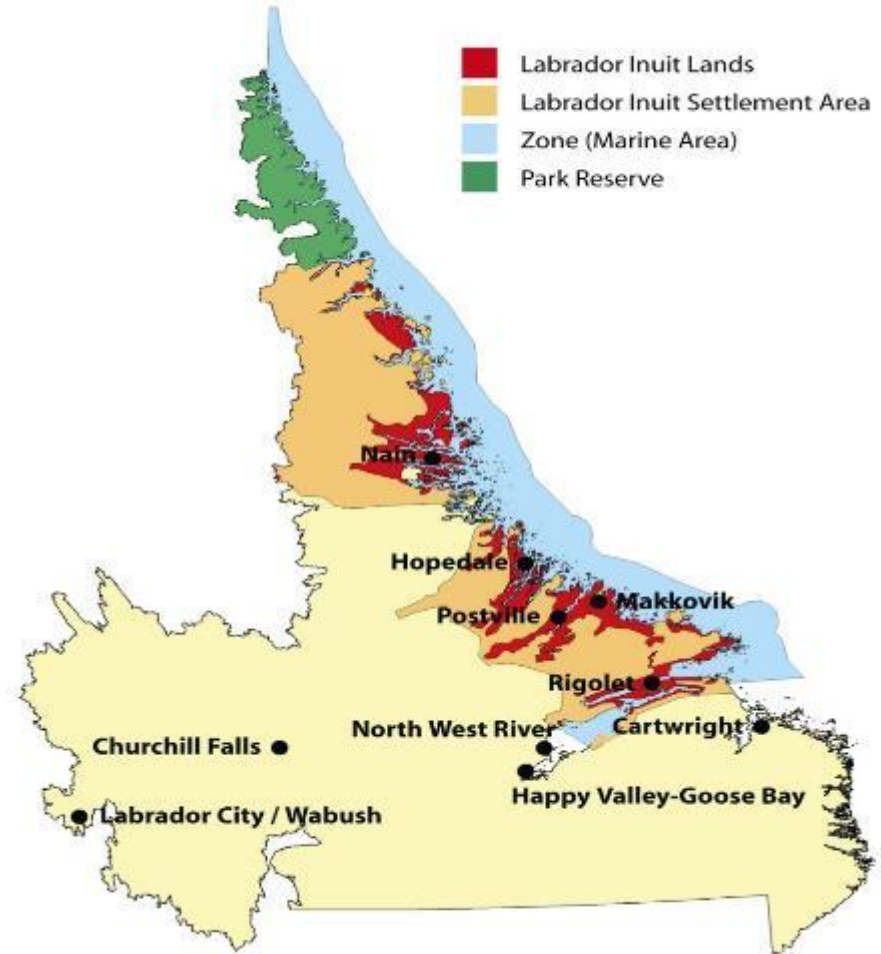


**NUNATSIAVUT**  
kavamanga Government

*Sivunittinik piggogutiKavugut. Sivunitsatinnilu tugâpviKatsiagumadluta.*  
*Proud of our past. Focused on our future.*

# Nunatsiavut: Our Beautiful Land

- Traditional Land belonging to the Inuit of Labrador
- Agreement signed on December 1<sup>st</sup> 2005
- 72,500 square kilometers in northern Labrador and 48,690 square kilometers of sea
- Torngat Mountains National Park Reserve, consisting of about 9,600 square kilometers of land within Labrador Inuit Settlement Area (LISA)
- 5 Communities and approx. 7,000 beneficiaries



*Sivunittinik piggogutiKavugut. Sivunitsatinnilu tugâpviKatsiagumadluta.  
Proud of our past. Focused on our future.*

# Nunatsiavut Land Claim Agreement

- Inuit have the exclusive Right to Harvest, throughout the Labrador Inuit Settlement Area
  - Includes polar bears
- Total Allowable Harvest of polar bears established by the Province of Newfoundland and Labrador.

*Sivunittinik piggogutiKavugut. Sivunitsatinnilu tugâpviKatsiagumadluta.*

*Proud of our past. Focused on our future.*

# Co-Management

- A collaborative approach to Management (3 parties):
  - Nunatsiavut Government;
  - Government of Newfoundland and Labrador;
  - Torngat Plants and Wildlife Co-Management Board.
- The NL Wildlife Act and Regulations & the Labrador Inuit Land Claim Agreement provide legislative framework for polar bear management in NL.
- Torngat Plants and Wildlife Co-Management Board can submit a decision on the Total Allowable Harvest of Polar Bear to the Provincial Minister.
- The Provincial Minister is ultimately responsible for a decision on Total Allowable Harvest.
- Nunatsiavut is responsible for managing licences, regulations and harvest.

*Sivunittinik piggogutiKavugut. Sivunitsatinnilu tugâpviKatsiagumadluta.*

*Proud of our past. Focused on our future.*

# Nunatsiavut Management System

- Very Restrictive Harvesting Regulations
- Each of the five (5) communities is issued two licences with the exception of Nain and Hopedale which receives three each for a total of 12 licenses
- Licenses are given out on a first come first serve basis. Each hunter has 72 hours to harvest a Polar Bear. If he or she is not successful, the next interested hunter is provided the license for 72 hours
- If a hunter is successful, he/she is then restricted from harvesting another Polar Bear for 2 years
- Failure to follow any Polar Bear harvesting regulations results in a 5 year ban from harvesting Polar Bear

*Sivunittinik piggogutiKavugut. Sivunitsatinnilu tugâpviKatsiagumadluta.*

*Proud of our past. Focused on our future.*

# Nunatsiavut Management System

- Biological samples such as fat, muscle, skull and the bacculum must be collected and returned within 7 days
- Length, girth, approximate age, health, date and location of harvest must also be recorded and returned to NG staff within 7 days
- Failure to comply results in confiscation of hide and meat, and a 5 year ban on harvesting
- Since our recorded harvest began we have had 100% compliance rate

*Sivunittinik piggogutiKavugut. Sivunitsatinnilu tugâpviKatsiagumadluta.  
Proud of our past. Focused on our future.*

# Nunatsiavut Harvest and Quota History

- Labrador Inuit have always harvested Polar Bear
- Recording of Polar Bear harvest in Newfoundland and Labrador began in 1980
- Prior to the 1991, Inuit in Labrador harvested Polar Bear without a set quota or management system
- In 1991, the Government of Newfoundland and Labrador implemented a quota of 4 Polar Bears for the Inuit of Labrador
- In 1998, the Labrador Inuit Polar Bear quota was increased to 6 licences. This decision was based on a Davis Strait Polar Bear population that was estimated 882 animals

*Sivunittinik piggogutiKavugut. Sivunitsatinnilu tugâpviKatsiagumadluta.*

*Proud of our past. Focused on our future.*

# Nunatsiavut Harvest and Quota History

- Since the ratification of our Land Claim Agreement in 2005, NG has become increasingly involved in Polar Bear management at all levels (regionally, nationally & internationally)
- Nunatsiavut elders and harvesters began reporting that polar bear incidents and sightings have increased dramatically
- In 2006, the Nunatsiavut Government began requesting for a more equitable share of the Davis Strait Polar Bear harvest. We consistently requested for an increase of 6 Polar Bears

*Sivunittinik piggogutiKavugut. Sivunitsatinnilu tugâpviKatsiagumadluta.*

*Proud of our past. Focused on our future.*

# Nunatsiavut Harvest and Quota History

- In 2011, despite repeated requests for an increase in quota from both the Nunatsiavut Government and the TWPCB, positive feedback from the user to user meeting in Kuujjuaq, and the newly released Davis Strait Polar Bear population estimate, the Province of Newfoundland and Labrador opted to implement a flexible management system for 2011 instead of increasing the quota to 12 Polar Bears
- In 2012, the Nunatsiavut Government was provided 12 licences. It has remained at 12 each year since

*Sivunittinik piggogutiKavugut. Sivunitsatinnilu tugâpviKatsiagumadluta.*

*Proud of our past. Focused on our future.*

# Conclusion

- The Nunatsiavut Government will continue to manage polar bear with both western science and traditional knowledge for the benefit of all Labrador Inuit and the preservation of polar bears and our traditional way of life

*Sivunittinik piggogutiKavugut. Sivunitsatinnilu tugâpviKatsiagumadluta.  
Proud of our past. Focused on our future.*



**THANK YOU!**  
**Nakummek!**



Department of Lands and Natural Resources, NG  
December 2014