

*CBMP, Coastal: monitoring and understanding
change in Arctic coastal zones:*

Short introduction to CBMP

By:

*Tom Christensen
Arctic Research Centre,
Aarhus University,
Denmark*

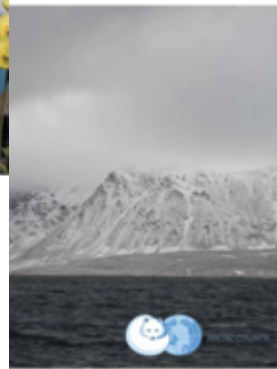
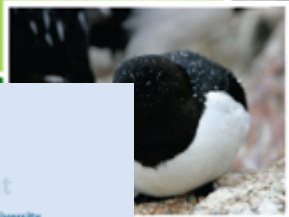


CIRCUMPOLAR BIODIVERSITY MONITORING PROGRAM - Coastal EMG

- Arctic Councils Biodiversity Monitoring Programme (under CAFF) and response to ACIA's recommendation to expand and enhance Arctic biodiversity monitoring and bridge the information
- Bridging the information-policy gap; including reporting
- CBMP contains of expert Monitoring Groups (EMGs)/ Steering Groups (SG):
 - **Marine, Coastal, Freshwater, Terrestrial**
 - Builds an Ecosystem-based approach and consist on network of networks
 - Forum for scientists and community experts (more than 100 international experts directly involved)
 - 3 Pan-Arctic, integrated monitoring plans

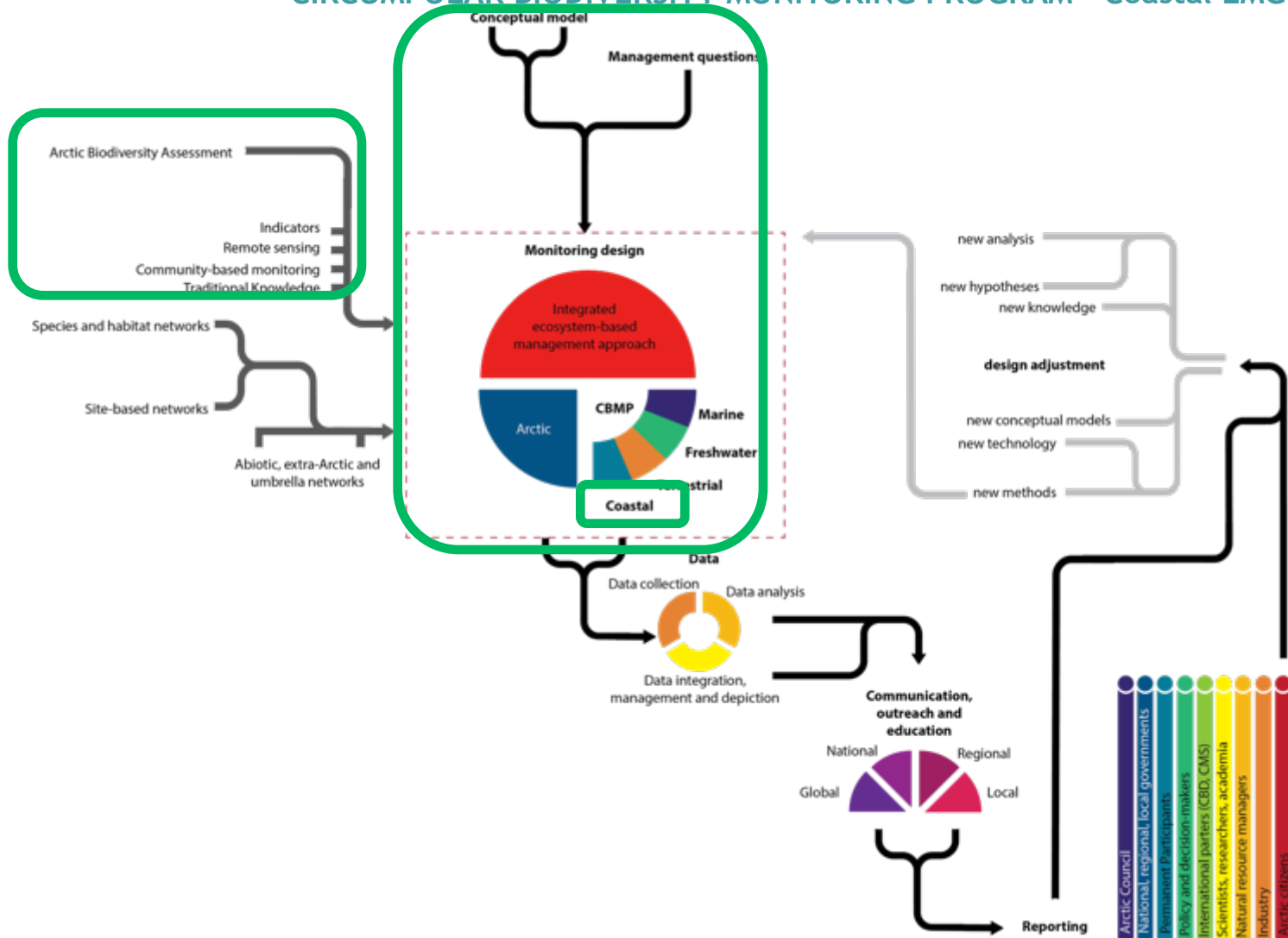


CIRCUMPOLAR BIODIVERSITY MONITORING PROGRAM - Coastal EMG



- Builds on the platform established by the CBMP five year implementation plan and the Arctic Biodiversity Assessment.
- Is the continued response to Arctic Council recommendations on biodiversity and ecosystem monitoring.
- A step to ensure integration of the different monitoring disciplines within CAFF.
- To bring on ground monitoring up on a regional and international scale through various products.
- Will have focus on ABA implementation in coming years

CIRCUMPOLAR BIODIVERSITY MONITORING PROGRAM - Coastal EMG





Thank you

