








Global Status and Trends: It's not black and white

Geoff York and Dag Vongraven
IUCN, Polar Bear Specialist Group



Figure 1.1

The Arctic Region

-  Continuous permafrost
-  Discontinuous permafrost
-  10°C - July isotherm
-  Phytogeographic Arctic boundary
-  Arctic Circle (Latitude: 66° 33' North)
-  Southern limit of Arctic data as provided by CAFF member countries
-  Outline of The Euro-Arctic Barents Region

Source data supplied by CAFF member countries:

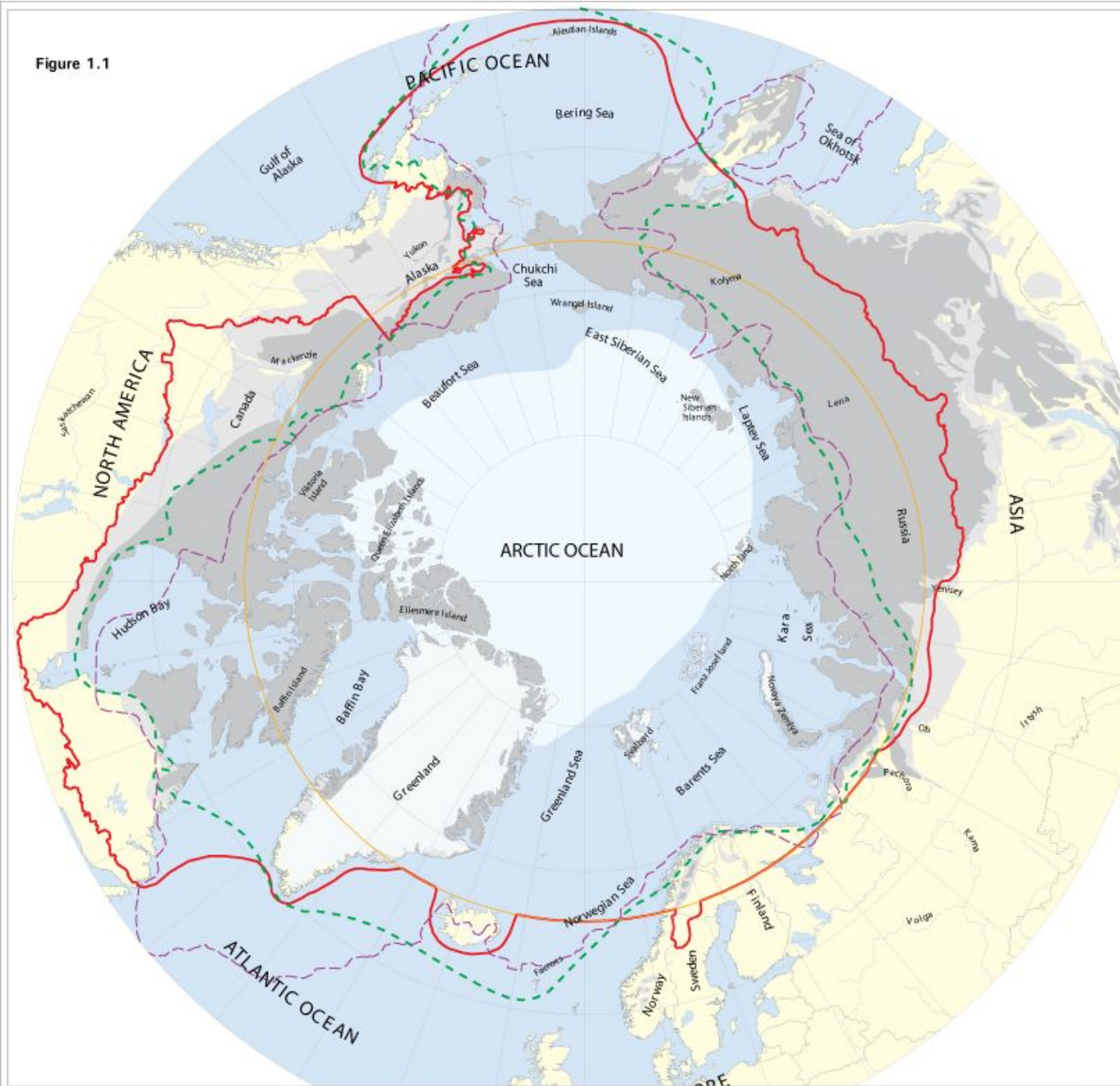


Compilation and map production by:



Disclaimer:
 Neither the delineation of boundaries nor the use of any name in the publication implies an expression of opinion on the part of UNEP concerning the legal status of any country or territory, or of its authorities, or concerning the delimitation of the frontiers of any country or territory.

Projection: Lambert-Azimuthal Equal Area. UNEP/GRID-Arendal March 1996.





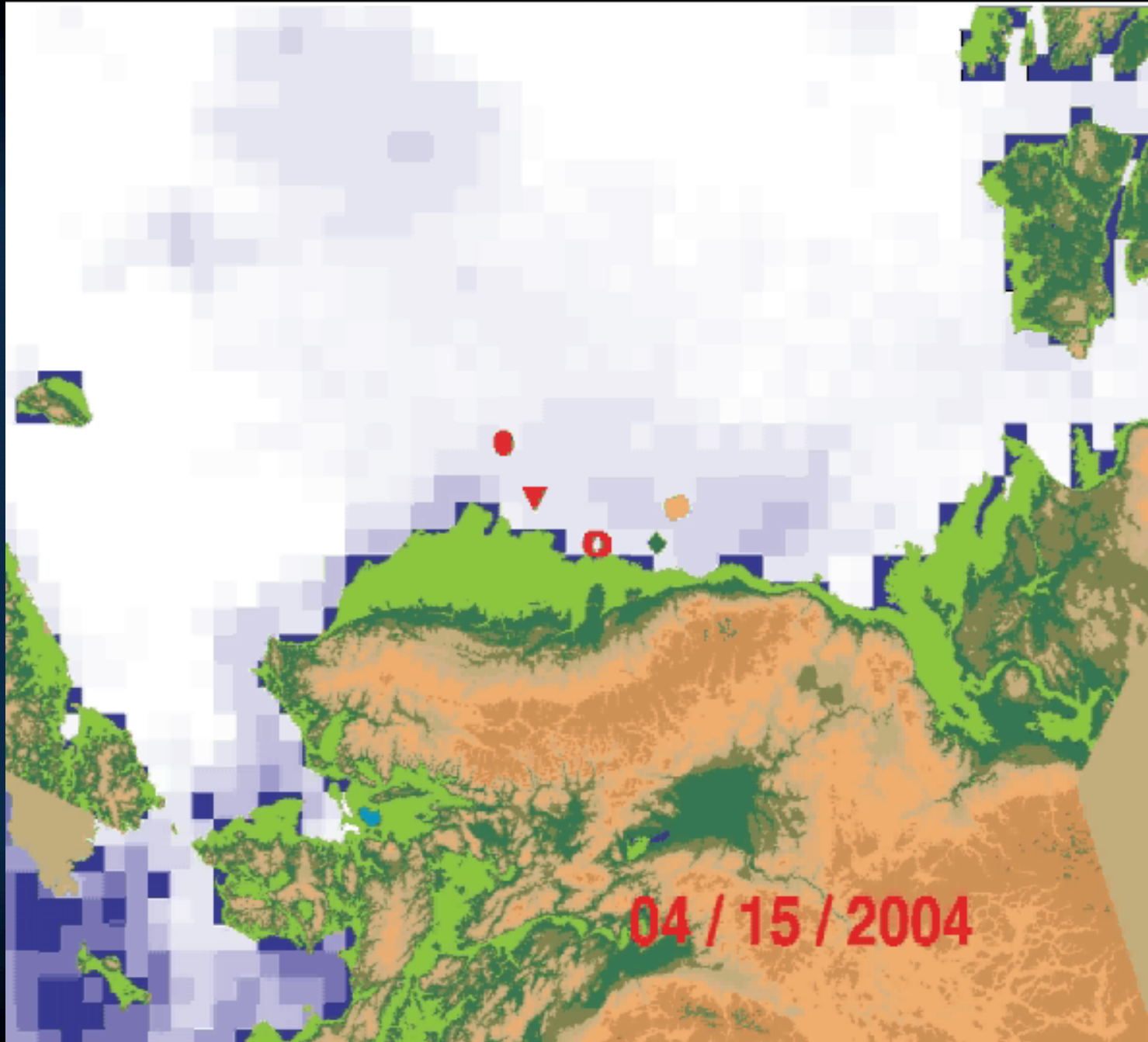
Range of polar bears

-  Pelagic
-  Archipelago
-  Seasonally ice-free
-  300m depth

Wild Polar Bears are among the most mobile of Quadrupeds



Polar bears are generally tied to the sea ice



Sea ice is the primary habitat for polar bears



Travel



Hunt



Mate



Some maternity denning

Ringed seal

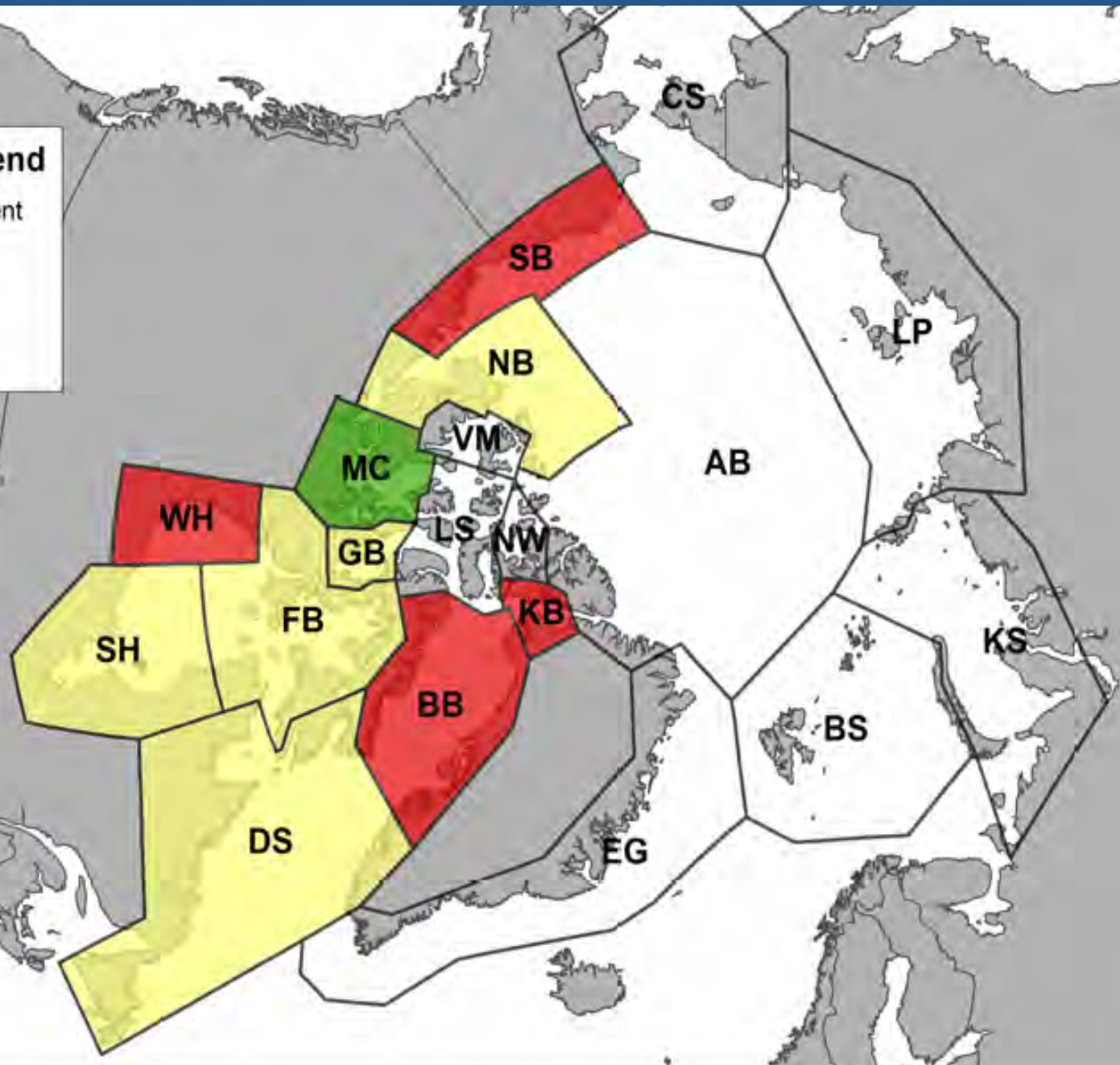
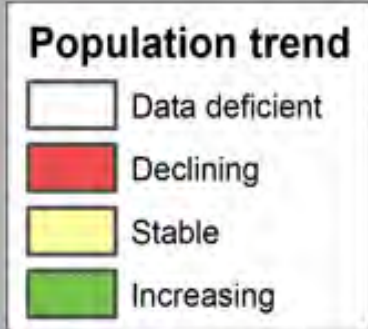


Bearded seal



Prey depend
upon ice





Primary Challenges

- Changes (climate change driven)
- Speed of change
- Assessing biodiversity

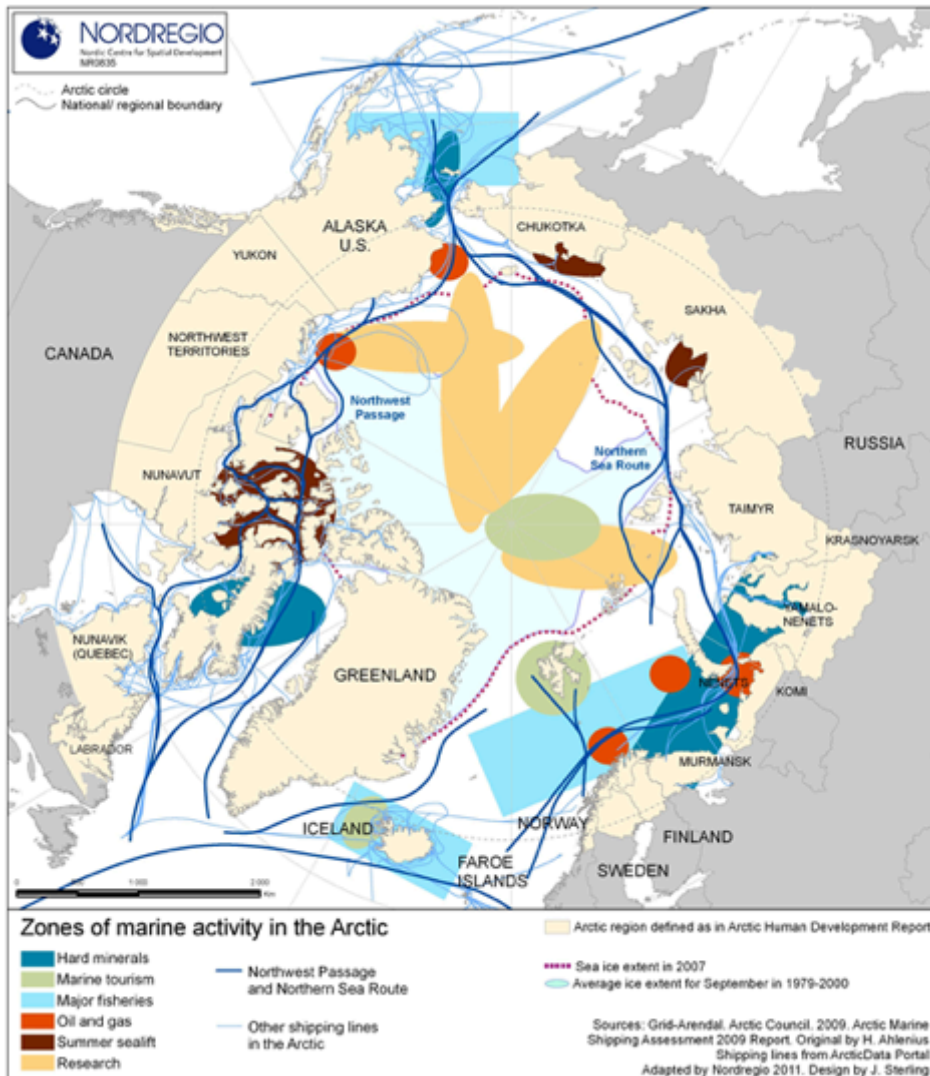




Concerns

- Shipping
- Fishing
- Oil and gas
- Mining
- Tourism
- Disease and Toxics
- Harvest
- Research

Challenge: Industrial Development



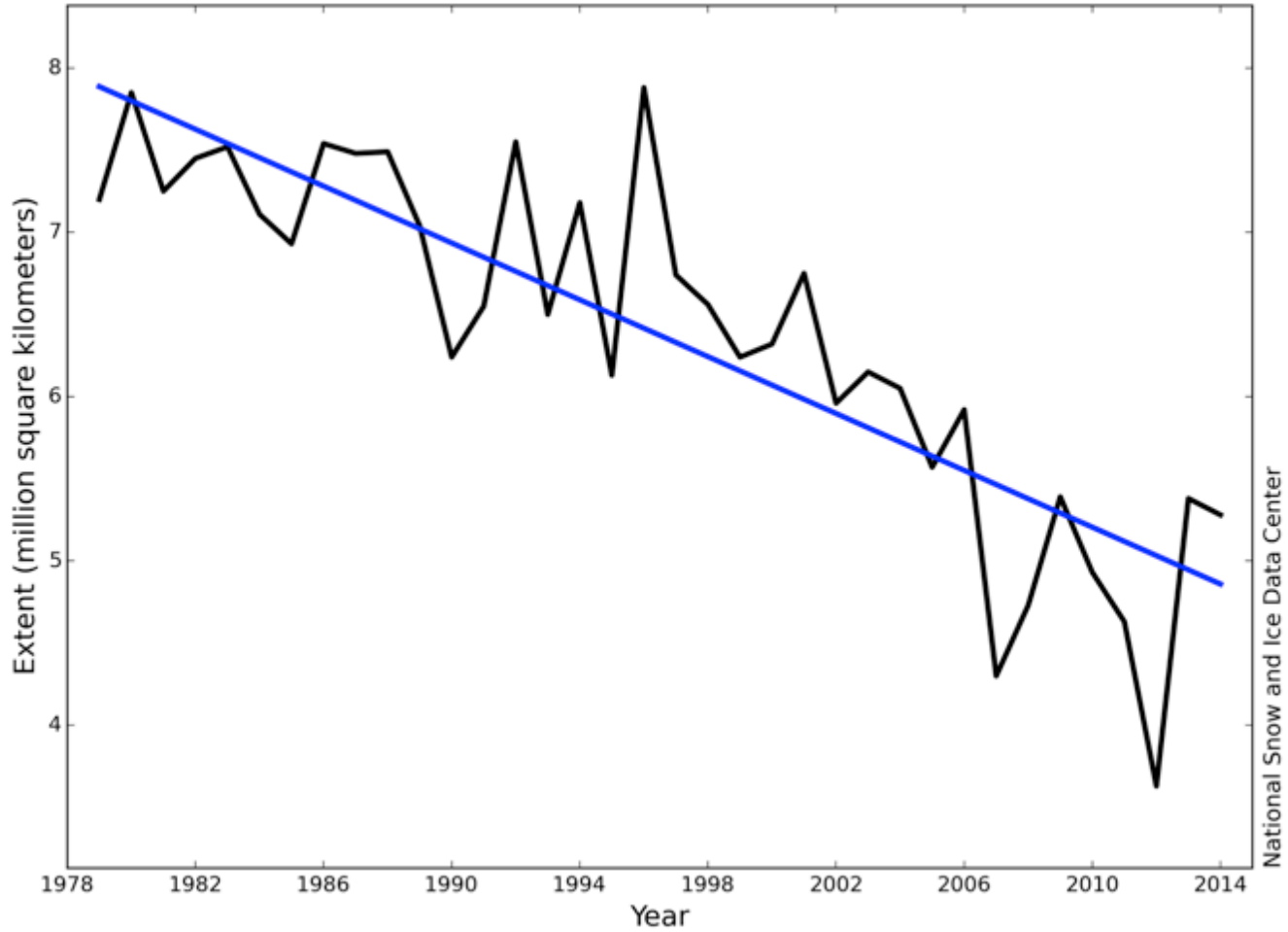
- Few easy resources
- Few reliable technologies
- Limited infrastructure
- Limited strategic and integrated assessments
- Few arctic-specific sector standards
- Limited knowledge of ecosystem's capacity to deal with impacts
- No comprehensive international governance regime

“We must plan for a world of change if we wish to conserve arctic ecological systems, including the services they provide to people.”

Bob Corell, climate scientist



Average Monthly Arctic Sea Ice Extent September 1979 - 2014



National Snow and Ice Data Center

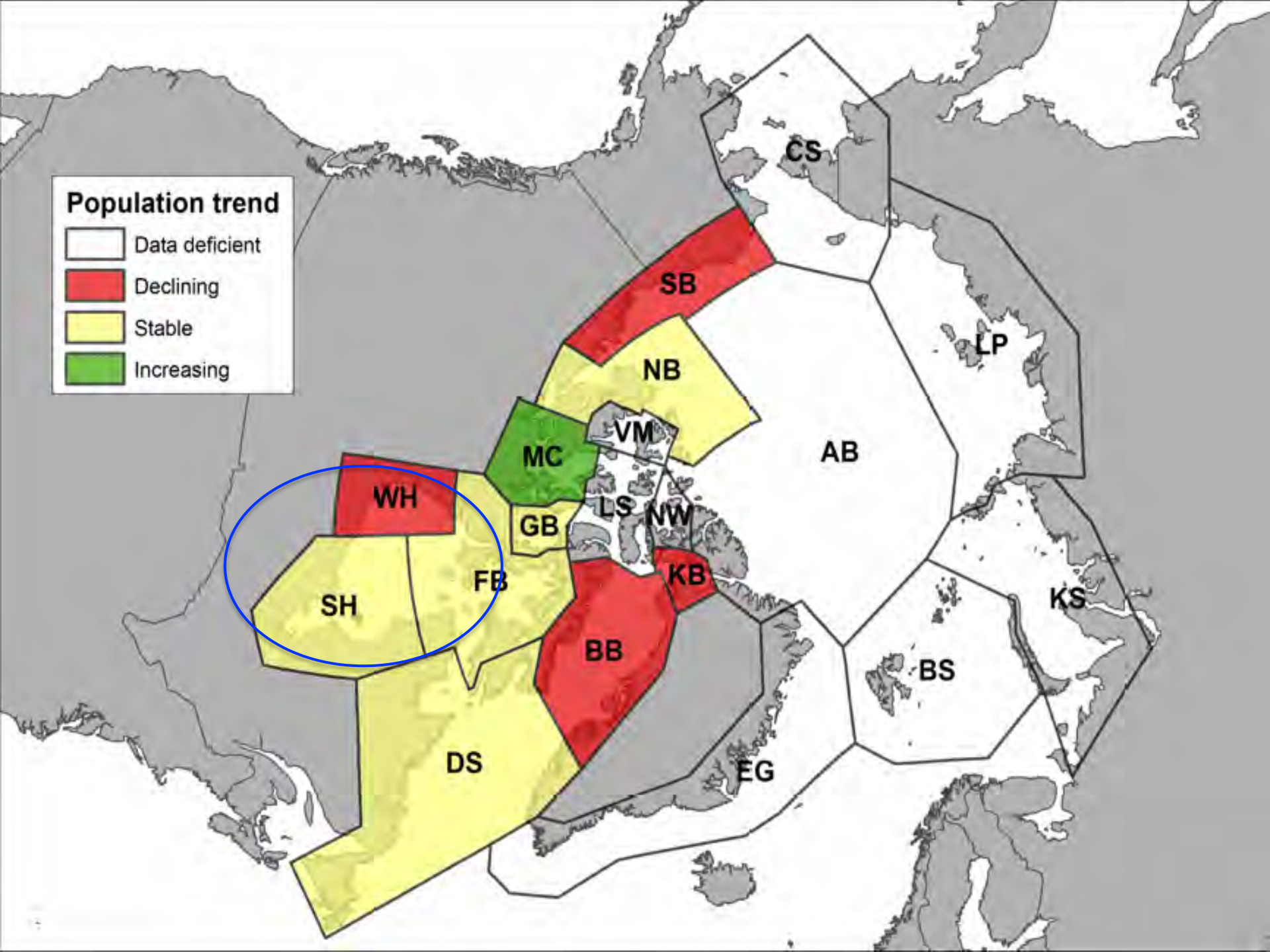
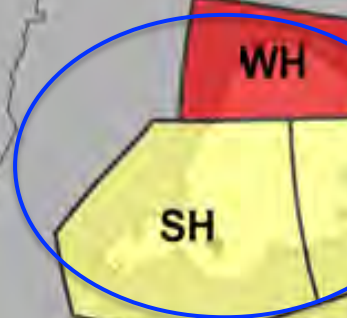
New solutions for changing times



Bob Hansen, Government of Nunavut

Population trend

- Data deficient
- Declining
- Stable
- Increasing



Regional Variation in Response

