

State of the Arctic Marine Biodiversity



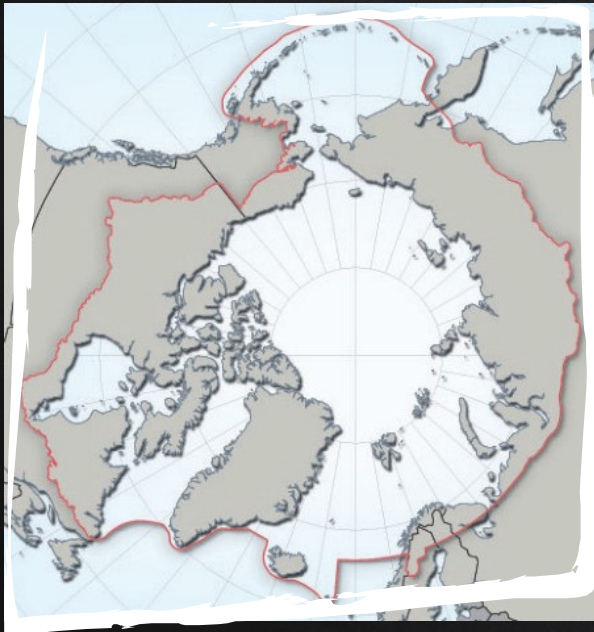
Tom Barry
Arctic Circle 2017



Bearded seal. Photo: Audunn Rikardsen

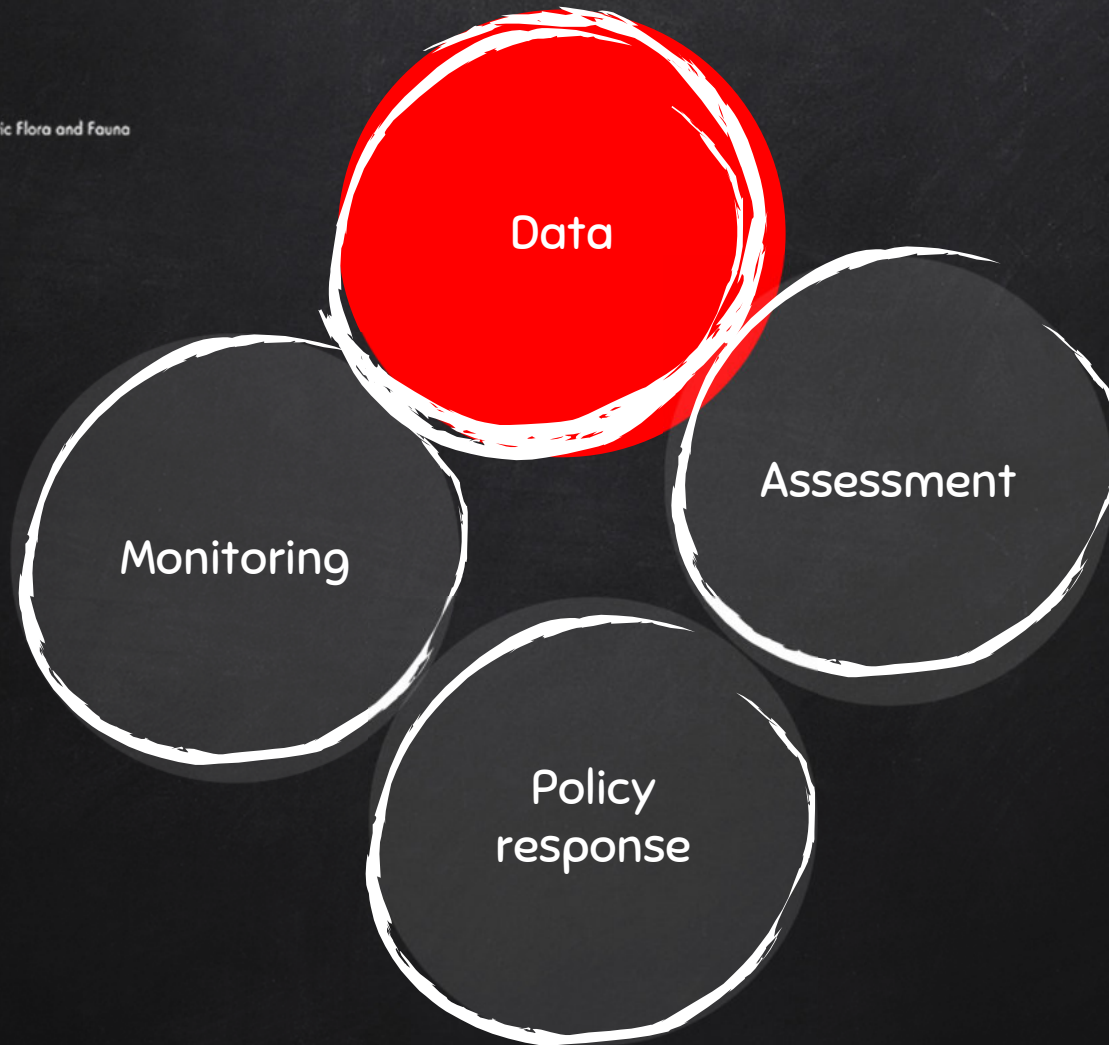


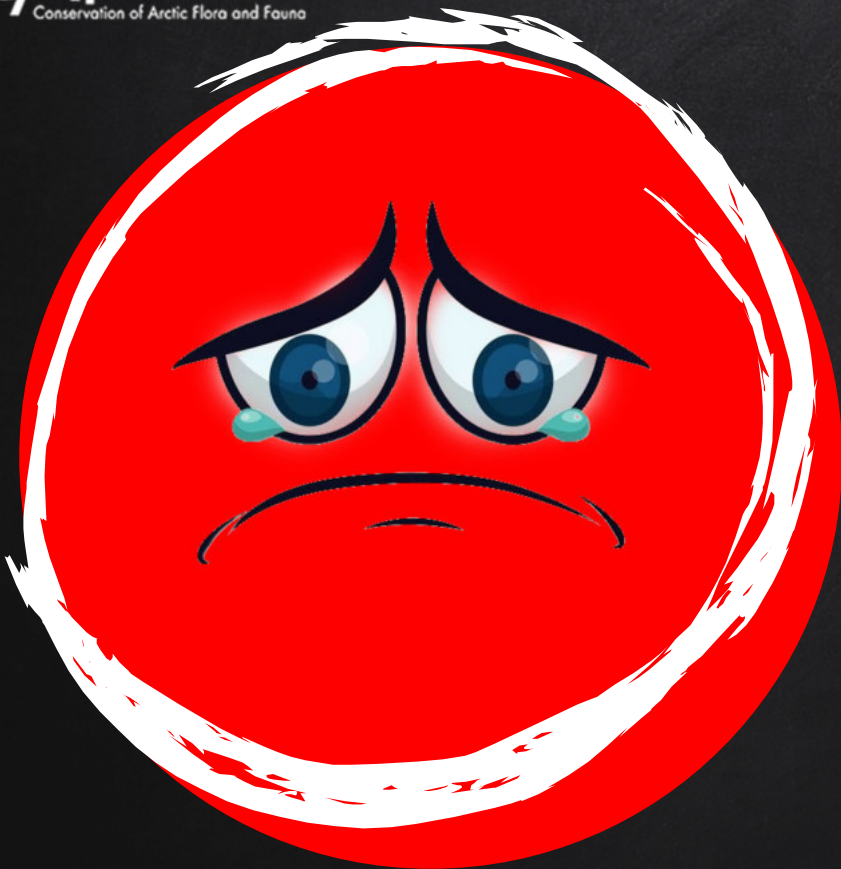
THE CHALLENGE



How do we **better harness** our knowledge and capacity to inform **timely and effective decisions** in the face of cumulative and accelerating change?







80% of data are unavailable after 20 years from publication.

Gibney and Van Noorden (2013), Nature



DATA
not available



PEOPLE
not available



Existing Data Often hard to find

Hard to access

Kept in a badly usable format

Very time consuming to access and
process- expensive

Limited usage rights

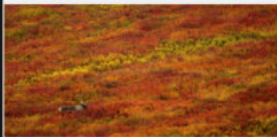
CAFF's ARCTIC BIODIVERSITY SERVICE

CBMP Arctic Marine Areas

Updated: 2 months ago

Regional divisions of the marine Arctic, as determined by the Marine Expert Monitoring Group of the Circumpolar Biodiversity Monitoring Programme (CBMP). The Circumpolar Marine Biodiversity Monitoring plan identifies eight Arctic Marine Areas where a suite of common parameters, sampling approaches and indicators will be used. Regionally specific parameters may also be applied. Exact boundaries may change over time to reflect changing bio-physical conditions.

Terrestrial



Freshwater



Marine

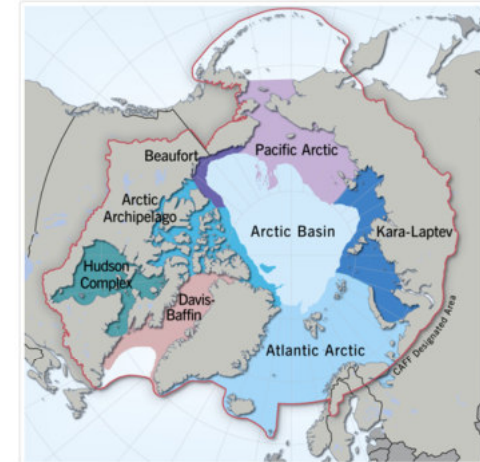


Used in 2011

Add to map

Download

Overview



Spatial extent

Headline indicator data

Languages



Protected Areas



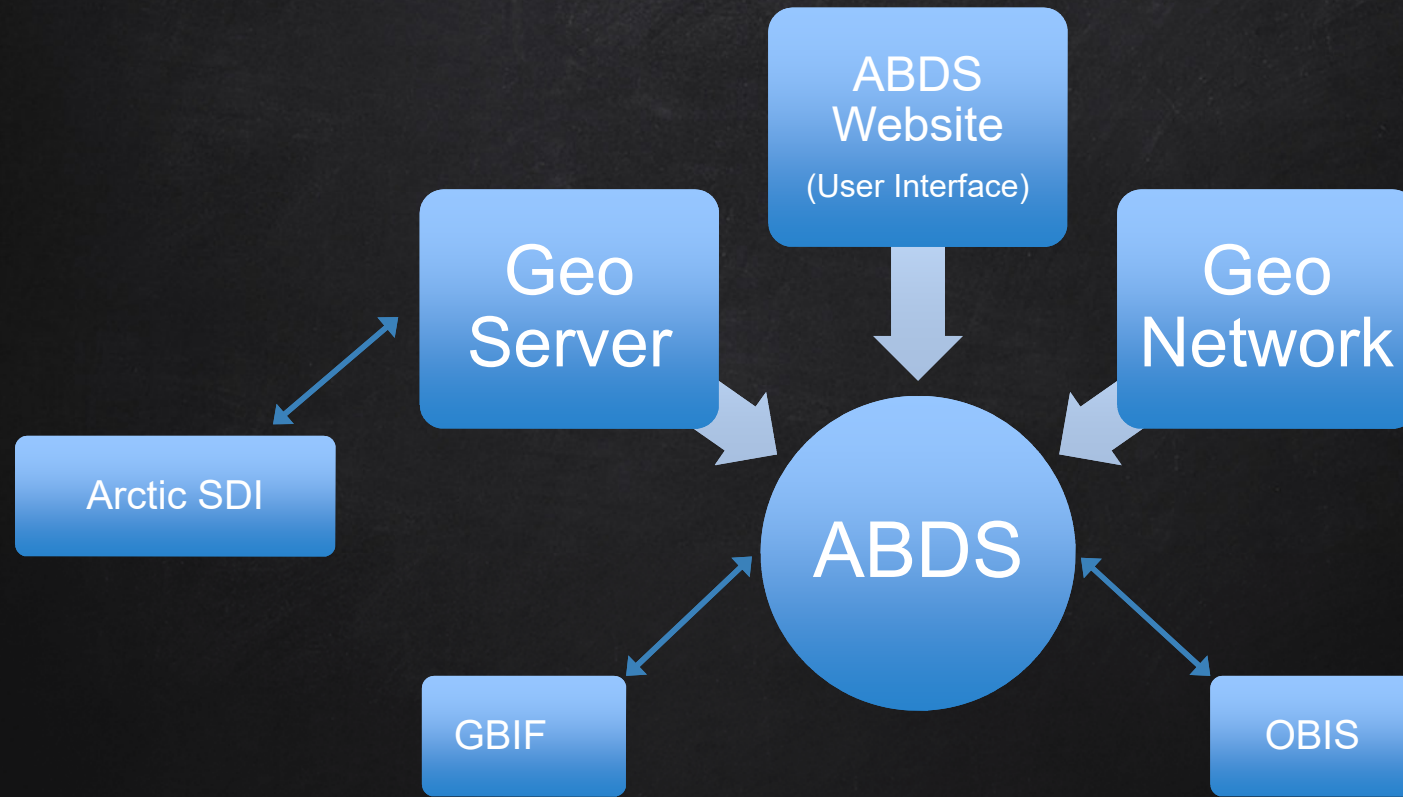
Land Cover Change



Arctic Species Trend Index



CAFF's ARCTIC BIODIVERSITY SERVICE



KIITOS!

You can find us at

@CAFFSecretariat

www.facebook.com/CAFFS

Kári Fannar Lárusson *Kari@caff.is*

