

A scenic landscape photograph of a lake in Västerbotten, Sweden. The lake is surrounded by tall, dark green pine trees in the foreground and middle ground. In the background, there are rolling hills under a bright blue sky with scattered white clouds. The water in the lake is calm and reflects the sky and trees.

# Future trends and drivers in the county of Västerbotten

by Tom Arnbom, WWF Sweden

Arctic Biodiversity Congress 2-4 Dec, 2014

Foto: Sofi Alexanderson

Foto: Ola Jennersten, WWF

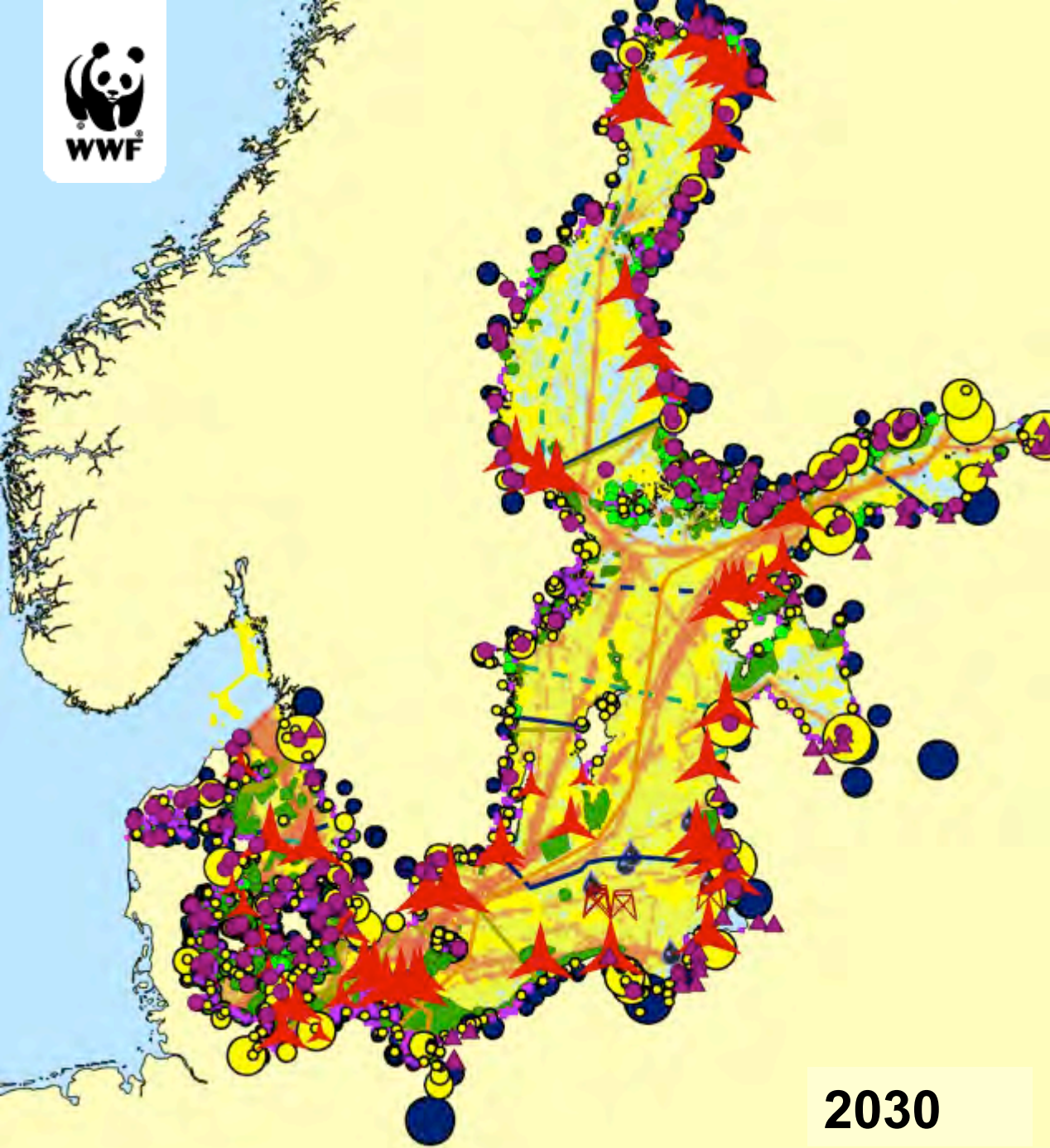
**How can different stakeholders find room in the landscape?**



Drawing by Linda Berglund



re trends  
ivers in  
ounty of  
erbotten  
nbom, WWF Sweden



2030

# The challenge

- Commercial Fishing
- Shipping
- Dredging
- Oil and Gas Extraction
- Pipelines and Cables
- Physical Exploitations
- Marine Protected Areas
- Aquaculture
- Agricultural Runoff
  - Nitrogen
  - Phosphorous
- Tourism and Recreation
- Ports
- Wind Energy
- Industrial Pollution





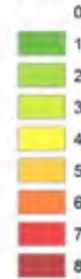




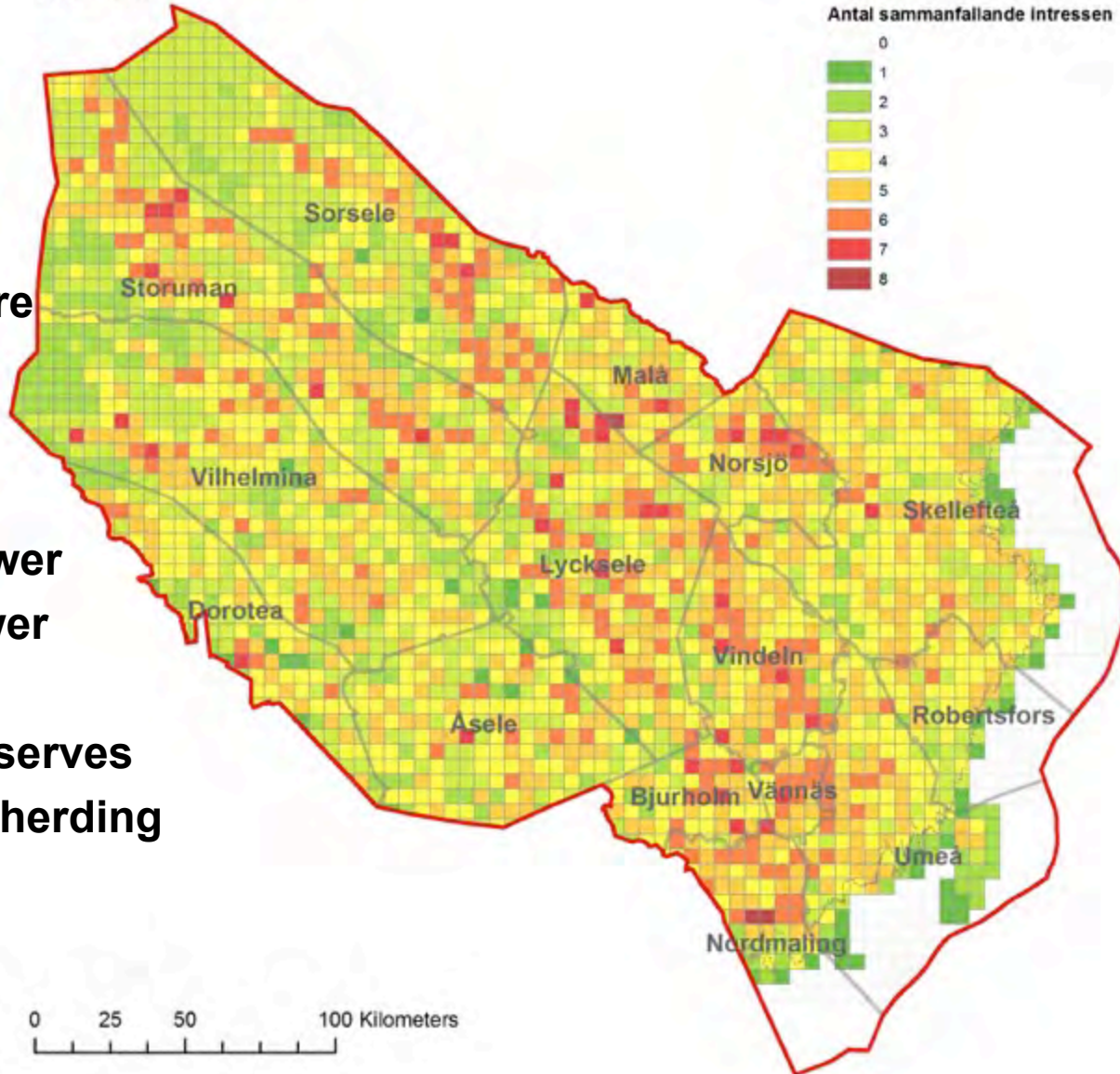


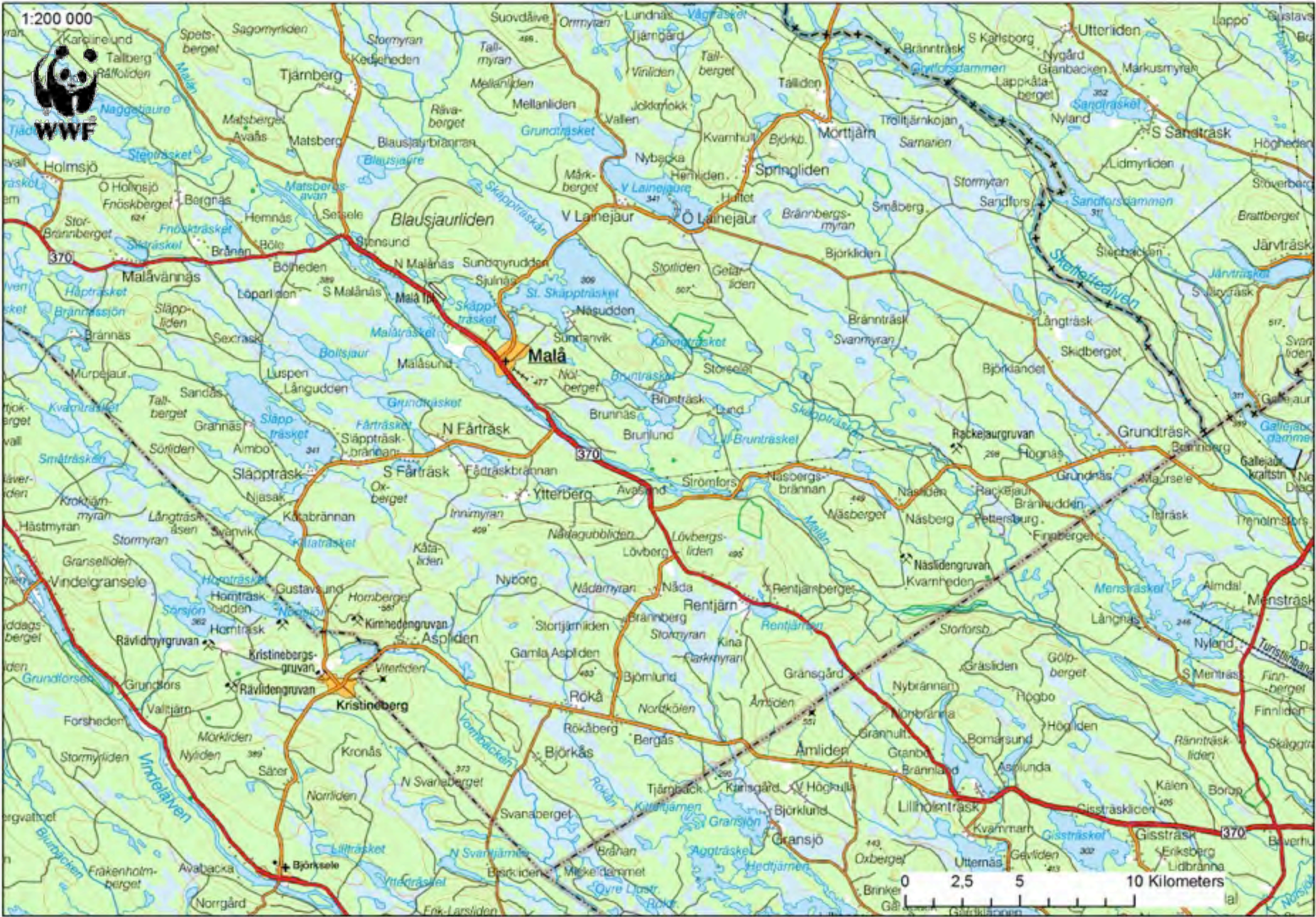
1:2 000 000

Antal sammanfallande intressen



- Forestry
- Agriculture
- Peat
- Mining
- Sand pits
- Water power
- Wind power
- Turism
- Nature reserves
- Reindeer herding





1:200 000



Skellefteälven

- Befintliga vindkraftverk
- Vindkraftverk - på gång
- Sand och naturgustakter
- GRUVOR: Beviljade bearbetningskoncessioner
- Beviljade undersökningstillstånd (metall/mineral)
- Dammar NV-klass 1-6
- Vattenkraftmagasin
- Skyddade områden med formellt skydd
- Rikssintresse Rennåring
- Rikssintresse friluftsliv
- Jordbruksblock ent. Jordbruksverkets blockdatabas
- Väg Jämväg Kraftledning
- Bebyggelse
- Enskilda vägar
- Vattendrag
- Total medelvolyvm från kNN 2005 - Avverkning borttagen
  - < 100 km skog per ha
  - 100-120 km skog per ha
  - > 120 km skog per ha

Malå

Kristineberg

Vindelälven

Björksele



# Thank you!

---

[www.wwf.se](http://www.wwf.se)

