



Baffinland
Canada 

Resource development, marine shipping and Arctic seabirds: a collaborative approach to assess potential impacts
Grant Gilchrist and Oliver Curran





Mary River Project

- Iron mine with a life of 21 years
- Operations consist of mining, ore crushing, land transportation and marine shipping
- 640 million tonnes at 64-70% iron
- No processing - no tailings produced



Mining



Land Transport



Ship Transport

Transportation for the Mary River Project





Milne Port

Land Claim and Environmental Assessment Process

Increasing Knowledge and Understanding

EEM

Regulatory compliance, environmental effects monitoring and reporting

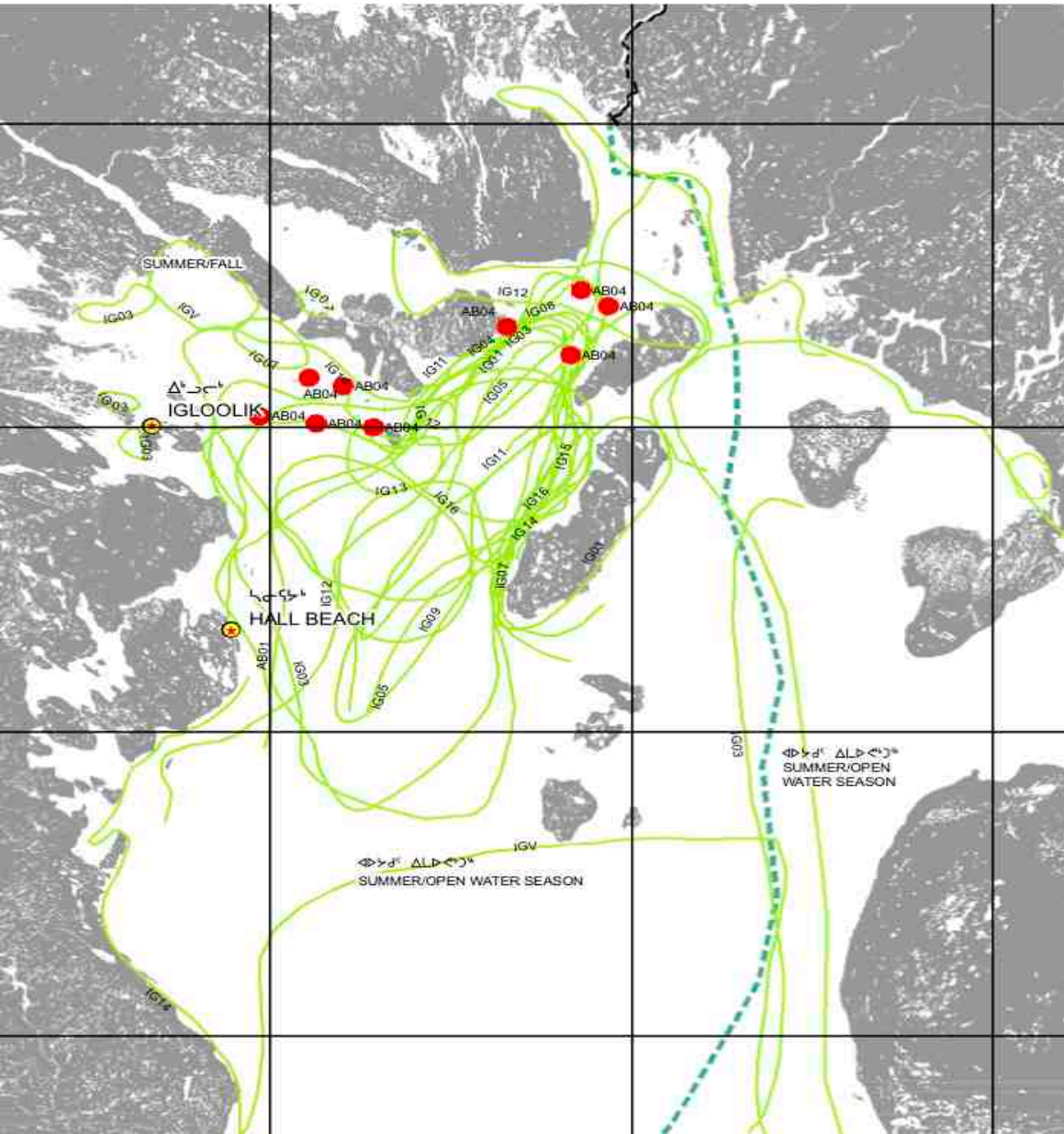
Certificate with Over 180 Conditions Requiring Environmental and Socio Economic Aspects

Draft and Final Environmental Impact Assessment, Community Consultations and Technical Review and Final Hearings (2009-2012)

Development Proposal Submitted (2008), Nunavut Impact Review Board Issues Scoping (2009), Over 600 Guidelines Addressing Species Biodiversity, Environmental, Social and Economic Aspects

7 Years of Consultation, Traditional Knowledge Workshops, Scientific Baseline Data Collection (2005-2012)

Inuit Traditional Knowledge and Values



Project design incorporated Inuit traditional knowledge and contemporary values – change in proposed shipping route



Final hearings for Mary River Project



**Signing of the IIBA and Commercial Production Lease
September 2013**

Moving Forward with Uncertainty

- Environmental effects assessment utilized both traditional and scientific knowledge
- Despite years of baseline work and traditional knowledge workshops, data gaps and uncertainty remain
- Wildlife interactions with Baffinland's transportation corridors is the focus for Environmental Effects Monitoring

EEM – Community Initiative – Collaborative Study



Path Forward

- Environmental studies are extraordinarily expensive in remote Arctic locations
- Increased knowledge requires collaborative research with Federal and Territorial Governments and Inuit Associations
- Collaboration with government and communities ensures consensus on research and how it can inform decision making

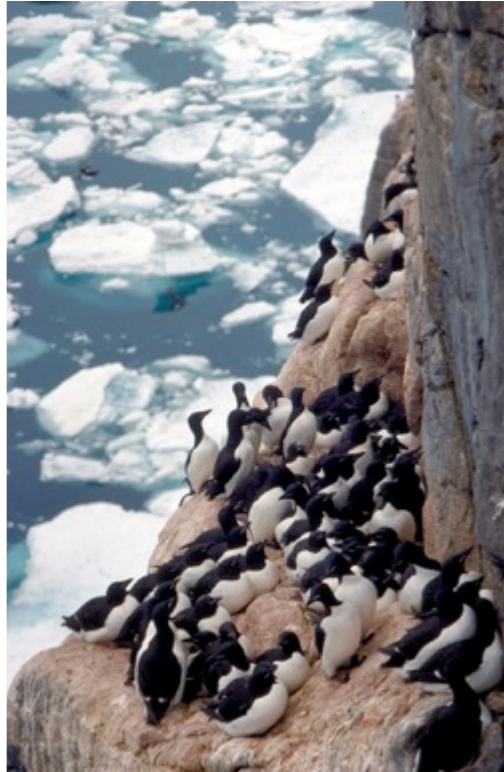




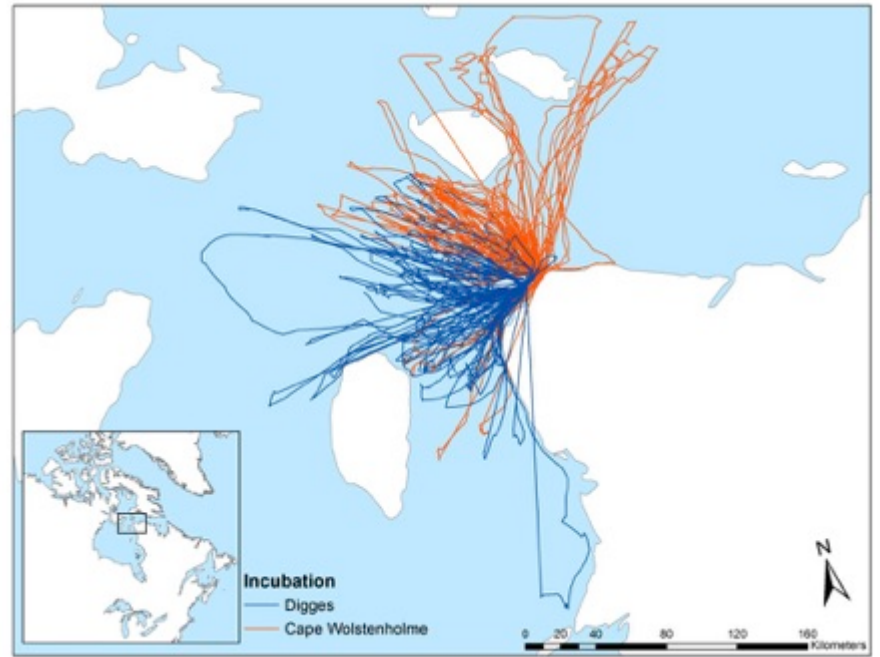
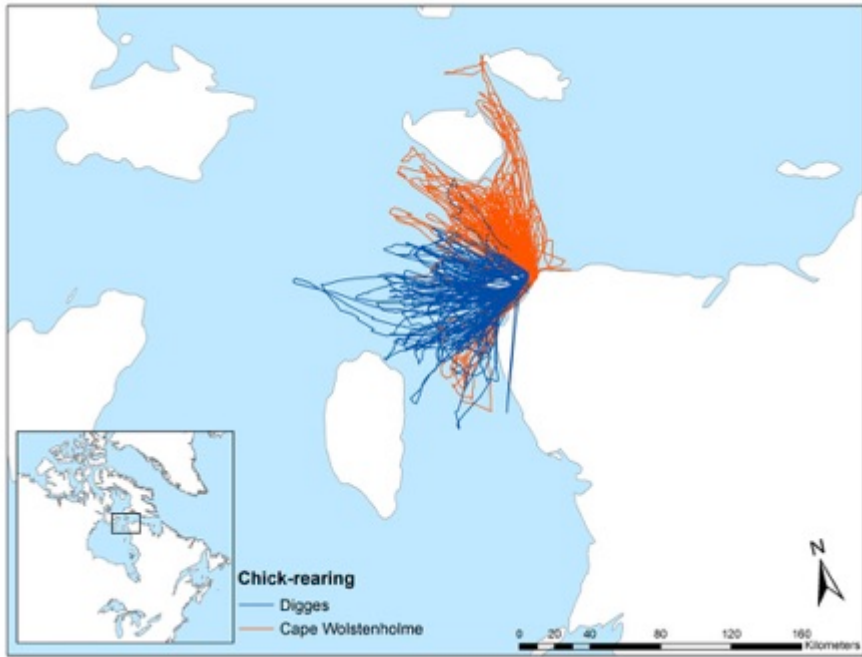
Our planned approach

- Environment Canada leads seabird research
- Baffinland Iron Mines Corporation contributes funds directly
- Project links with other Government Departments
- Inuit organisations are partners (Wildlife Co-management Boards, communities)

Thick-billed Murres – a cliff-nesting seabird



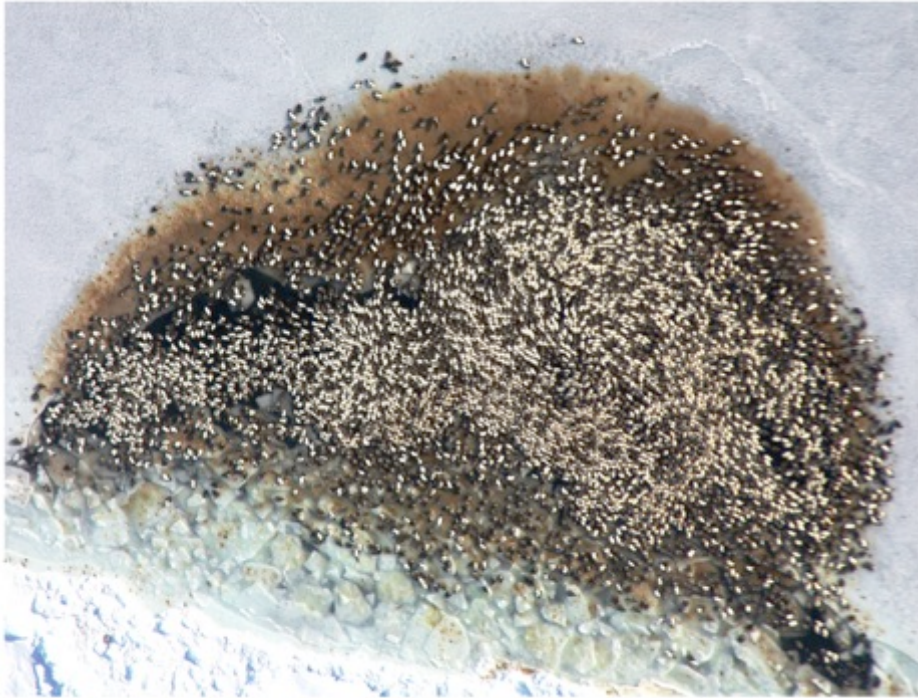




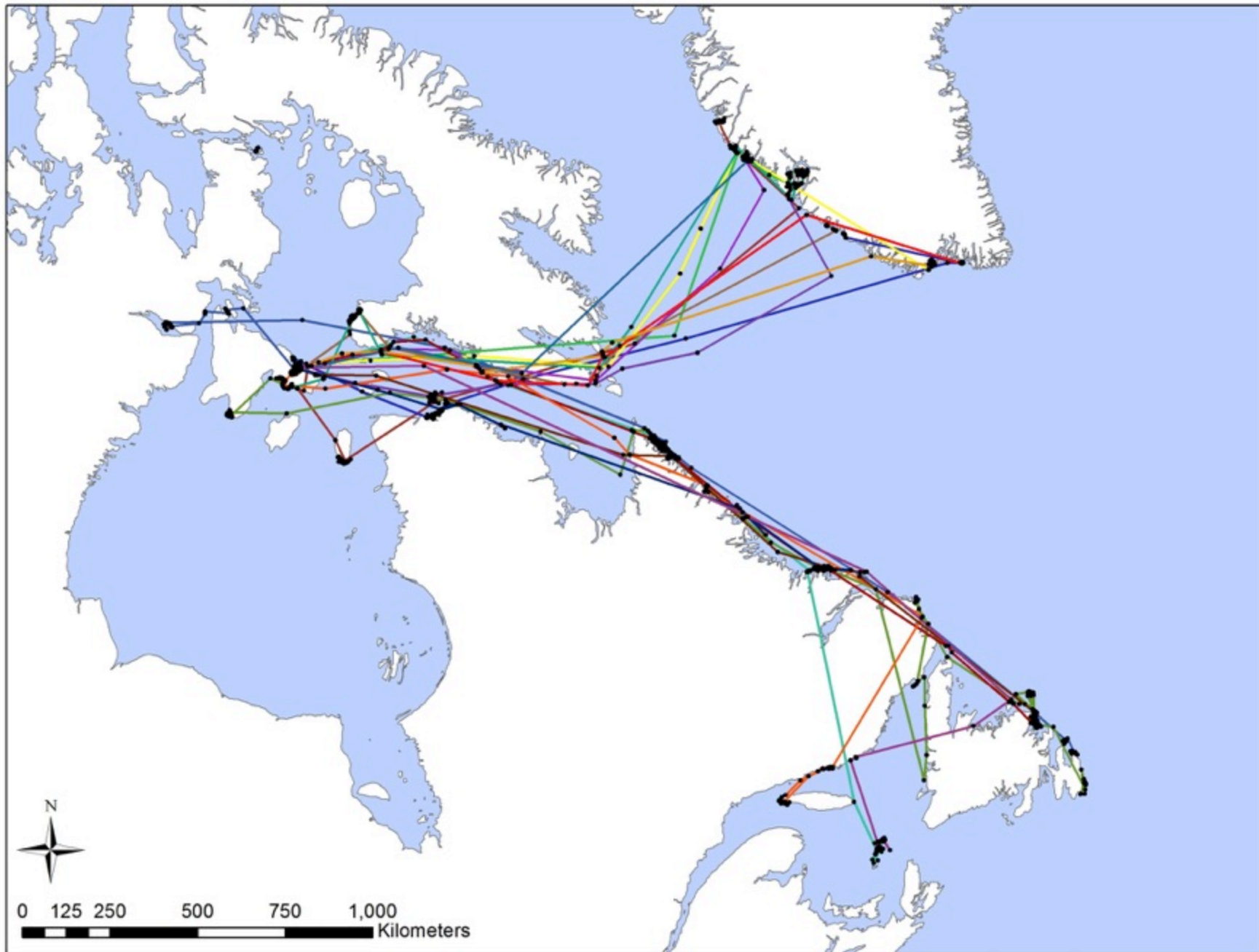




Eiders on ice







Information generated will be ...

- Repeatable
- Scientifically and legally defensible
- Contribute to Marine Spatial Planning
- Establish the baseline of information required for regulatory approaches and long-term monitoring



 **Baffinland**

Thank You

Canada 