



Transboundary cooperation

between Norway, Russia and Finland in Pasvik-Inari
Trilateral Park

Riina Tervo, 11.10.2018



METSÄHALLITUS

© Rolf E. Sch. Kollstrøm, Øvre Pasvik National Park Board

Pasvik Inari Trilateral Park

Total area of 2 790 km²



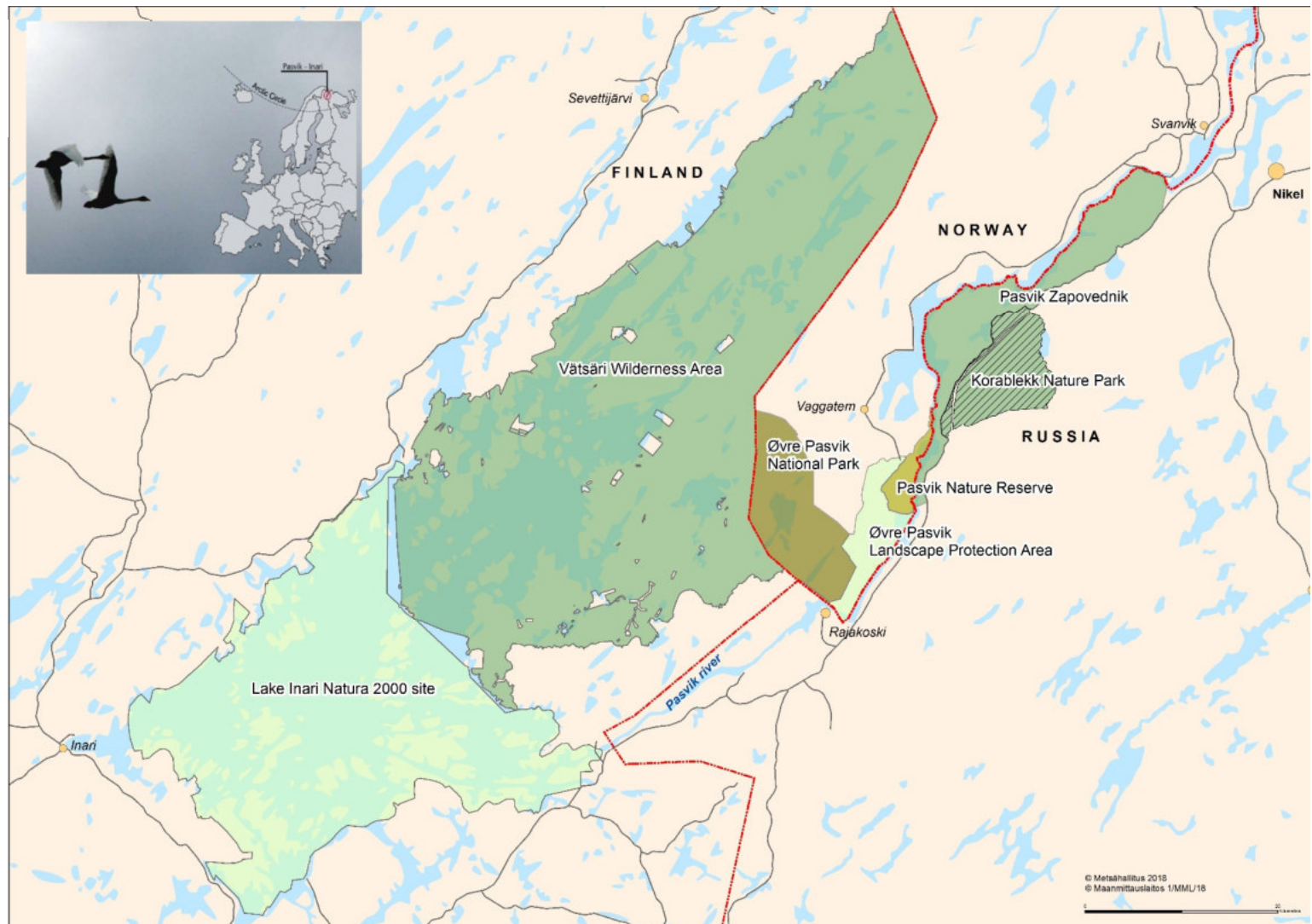
**Øvre Pasvik
National Park**



Fylkesmannen i Finnmark
Finnmárku fylkkamánni

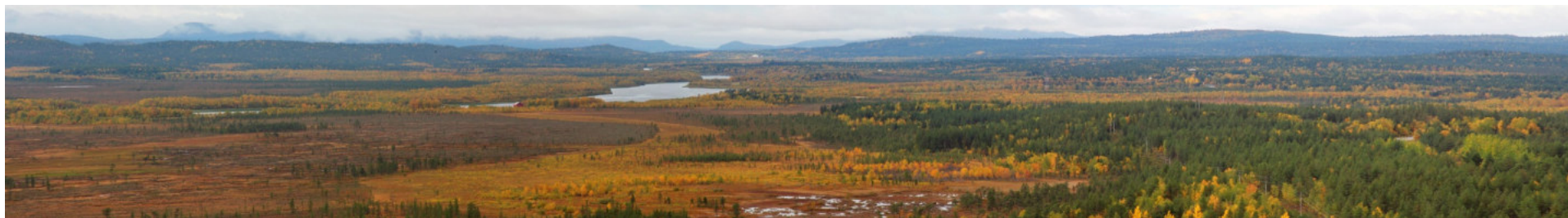


METSÄHALLITUS





© Olli Manninen



© Juha Paso, Metsähallitus



EUROPARC's Transboundary Parks - programme

Label for high-quality international cooperation

- Standards
- Evaluation
 - Selfcriticism of partners: state of cooperation, development, SWOT
 - External verifier from EUROPARC on-site
 - Discussion including stakeholders
 - Evaluation report by verifier containing analysis and recommendations for future
- Certificate valid for 5 years
- Re-evaluation



Primary criteria: **common vision, common workplan, official agreement between the parks,** cooperation between staff from each area

Secondary criteria: guiding principles for the cooperation, exchange of data, foreign language communication, basis of joint financing

Primary fields of work: **nature conservation**

Secondary fields of work: **education and communication,** recreation and sustainable tourism, **research and monitoring** and mutual understanding

Protected areas must also demonstrate how they involve local communities in the transboundary cooperation and how the socio-cultural differences of the cooperating parties are acknowledged and respected.



EUROPARC
FEDERATION


Transboundary Parks
E U R O P A R C

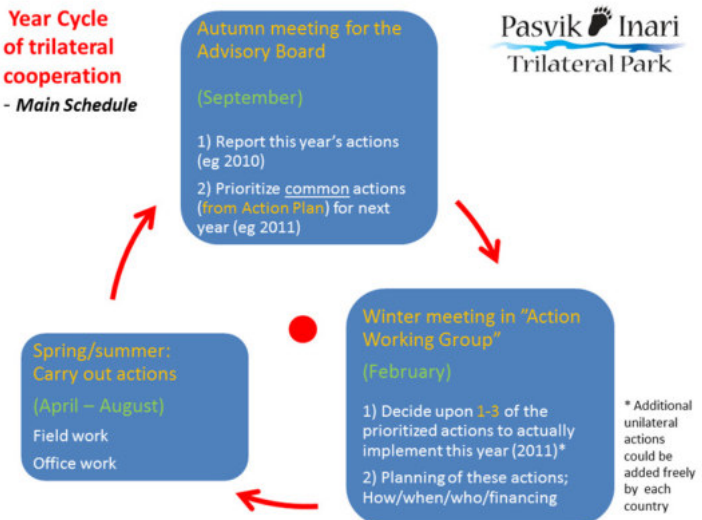
Common workplan = Action plan 2019–2028

Pasvik-Inari Trilateral Park is a unique cooperation for the benefit of nature and people

- Through transboundary cooperation we cherish nature and raise awareness on biodiversity conservation and living cultural heritage. We promote sustainable development in the joint border area of Finland, Norway and Russia, as well as human health and wellbeing.
- Five main objectives
 - Enhance transboundary cooperation and contacts at all levels.
 - Conserve natural and cultural values of the Pasvik-Inari region on a long-term basis.
 - Raise awareness and promote recognition of the area.
 - Contribute to the sustainable development and create positive local economic impact.
 - Facilitate for health and wellbeing of the people.



**Year Cycle
of trilateral
cooperation**
- Main Schedule



Official agreement between the parks

Engagement

- Devoted organisations and people
- Annual resources
 - Staff and their working time
 - Meetings
 - Money in the organisation's budget
- Strong partnerships
 - Planning and implementing projects



VI Application and validity of the agreement

Questions and possible controversies, as well as demands for amendments concerning the application of this agreement will be discussed in the meetings of the trilateral advisory board.

The agreement can be terminated in writing, with one years notice.

The agreement will become valid at the moment of signing.

This agreement exists in four different language versions; English, Finnish, Russian and Norwegian.

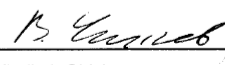
Inari 23.1.2008

Metsähallitus
Natural Heritage Services

Rosprirodnadzor
Pashvik Zapovednik

County Governor of Finnmark
Department of Environmental Affairs


Jyrki Tolonen
Regional Director


Vladimir Chizhov
Director of Zapovednik


Bernt Christiansen
Head of Department



PAN - Phenomena of Arctic Nature (K02093)

Education and communication

- Networks
 - Visitor centres in three countries, Phenology of North Calotte -project between schools
- Nature school in Russia
- Events
 - Bird watching trip in June, Be a Researcher-days
- Various educational materials
 - Games, temporary exhibitions, leaflets and brochures
- Communication
 - www.pasvik-inari.net,
<https://prosjekt.fylkesmannen.no/Pasvik-Inari/>
 - Short story of Pasvik-Inari Trilateral Park
https://www.youtube.com/watch?v=pG2mZYa_gh4



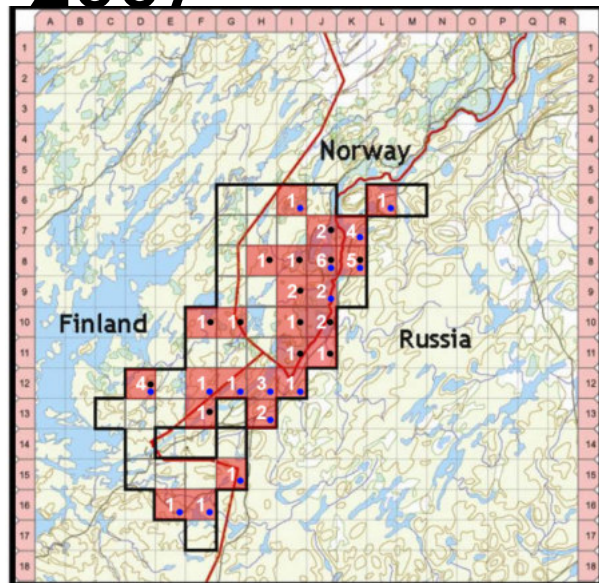
Research and monitoring

Joint monitoring

- Annual waterfowl registration on River Pasvik since 1996
- Brown bear monitoring every 4th year since 2007
- Future work: development of joint monitoring plan for ongoing activities and introducing new items



2007



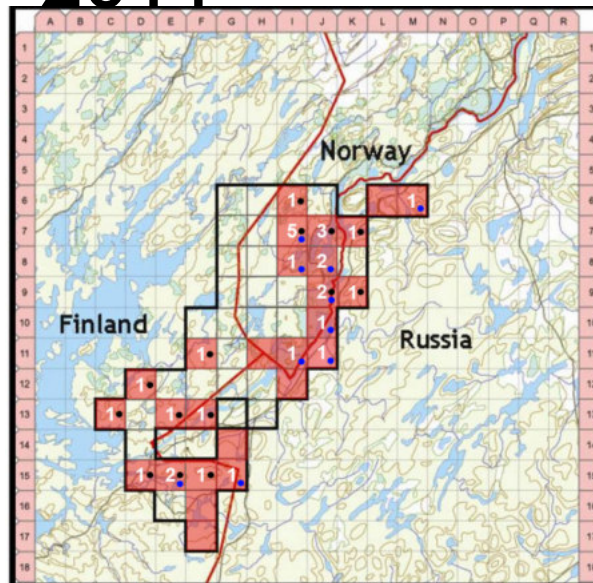
196 samples collected
26 of 56 grids showed activity
24 bears identified
(10 females, 14 males)
11 new identified, 13 known

 METSÄHALLITUS



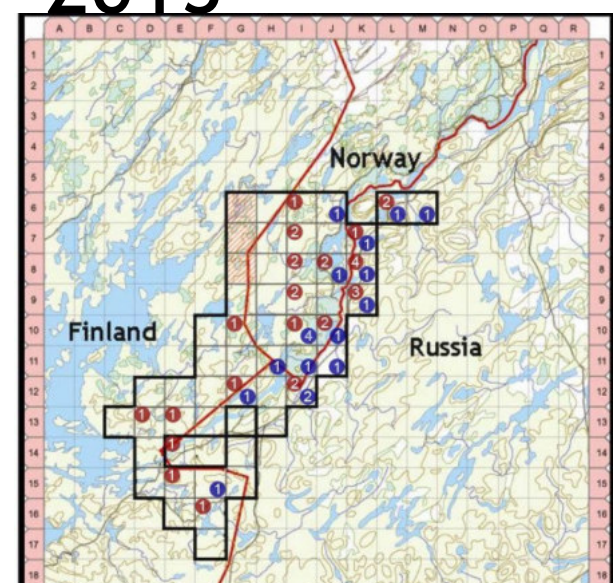
NIBIO
NORWEGIAN INSTITUTE OF
BIOECONOMY RESEARCH

2011

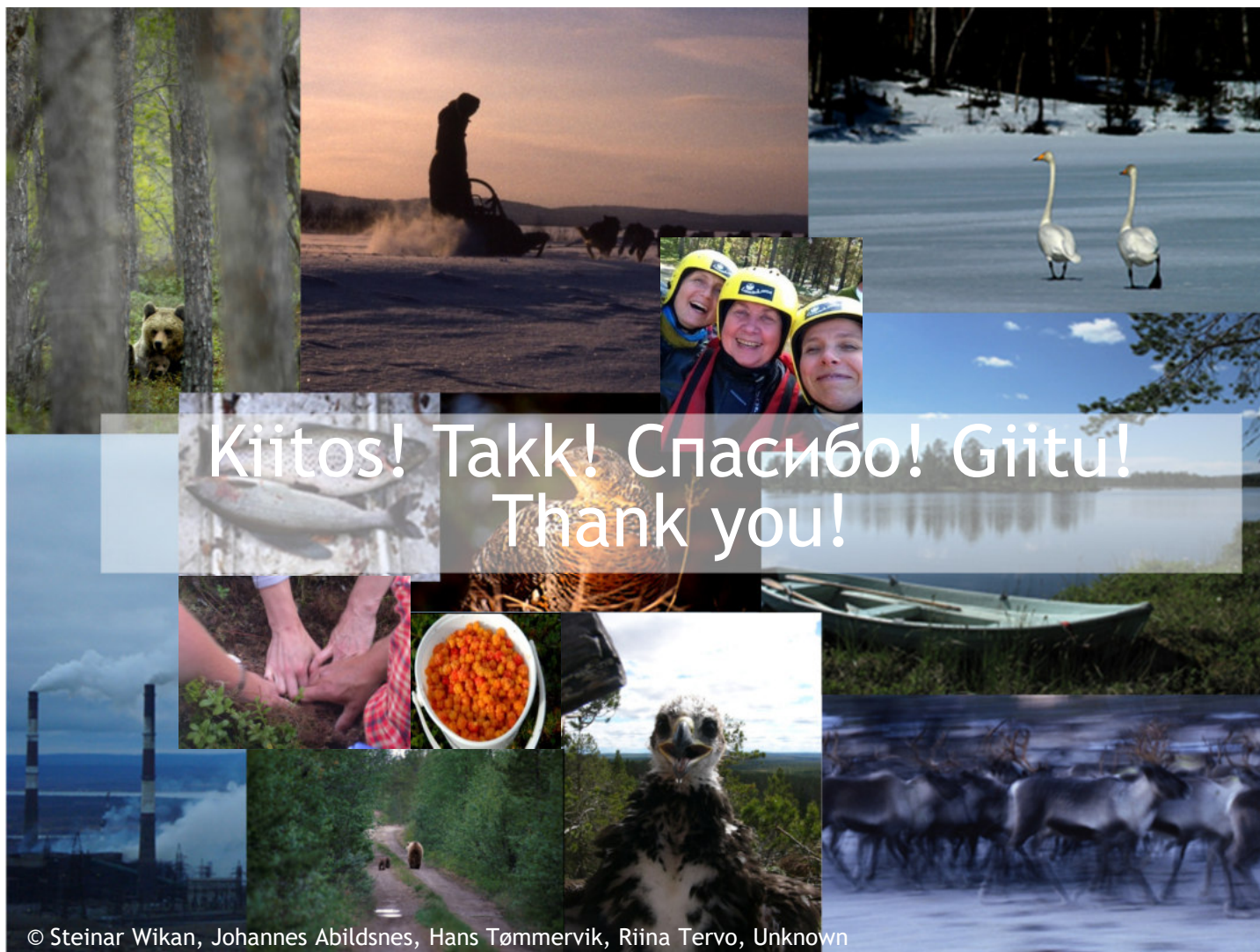


88 samples collected
27 of 56 grids showed activity
20 bears identified
(12 females, 8 males)
4 new identified, 16 known
one bear both in Norway and Russia

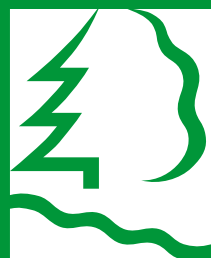
2015



209 samples collected
25 of 56 grids showed activity
26 bears identified
(17 females, 9 males)
13 new identified, 13 known
2 bears in two countries, one
bear in all three



© Steinar Wikan, Johannes Abildsnes, Hans Tømmervik, Riina Tervo, Unknown



METSÄHALLITUS

www.metsa.fi

riina.tervo@metsa.fi



www.facebook.com/metsahallitus
www.twitter.com/metsahallitus

