



Sámi allaskuvla
Sámi University College



- **Initiated by the project**
Árbediehtu

- Working with TK and Sámi knowledge of nature

- Collect, document, systematize and analyze Sámi traditional knowledge on the understanding of nature and nature use

- Establishment of Centre for Sámi Traditional Knowledge

- Financed by Ministry of Local Government and Modernisation, Sámi parliament and Sámi University College



Sámi allaskuvla
Sámi University College

A person wearing a dark winter coat and a fur-lined hood stands in a snowy landscape, looking out over a body of water under a sunset sky. Bare trees are visible in the background.

«Mu dieđut gal manne diehko
dien áhpái»

My knowledge goes out to the sea ...
when I'm not here anymore

Dagny Larsen

at Mine kunnskaper går ut i havet...
Da jeg faller om.

“Traditional knowledge; theory, method and traditional knowledge as a basis for management of resources”

Interdisciplinary study on the basis of indigenous way of thinking and understanding

1. Theory on traditional knowledge
2. Methods on documentation of traditional knowledge
3. Traditional knowledge in resource management



Sámi allaskuvla
Sámi University College



From coast to mountains

- Formal education, courses, seminars and workshops

- fundamental in the study:
The Convention on Biological Diversity (CBD)

“Other studies has the western perspective, but in this study, I had to learn to think with a **natural human** perspective” (quote by student)

Gatherings and online courses



- 3-4 gatherings each semester
- Lectures online
- Assignments
- Written and oral exam

Sámi allaskuvla
Sámi University College

Digitigiláš - Sámi allaskuvla neahttaoahpahus > ARBEVIROLÁŠ MÁHTTU - TRADISJONELL KUNNSKAP > ARB 180-181 - 2014/2015 > Bargoplánat

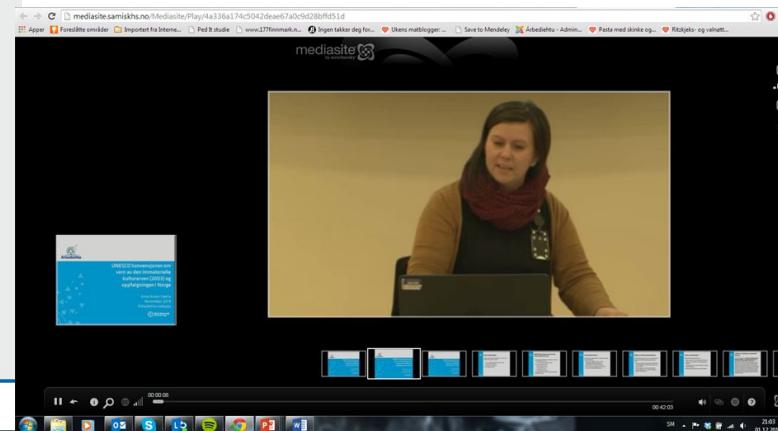
Rievdat | Ráhkát plána | Ráhkát plána máile miehde | Studeantabargu | Árvvoštallan/Rapporta

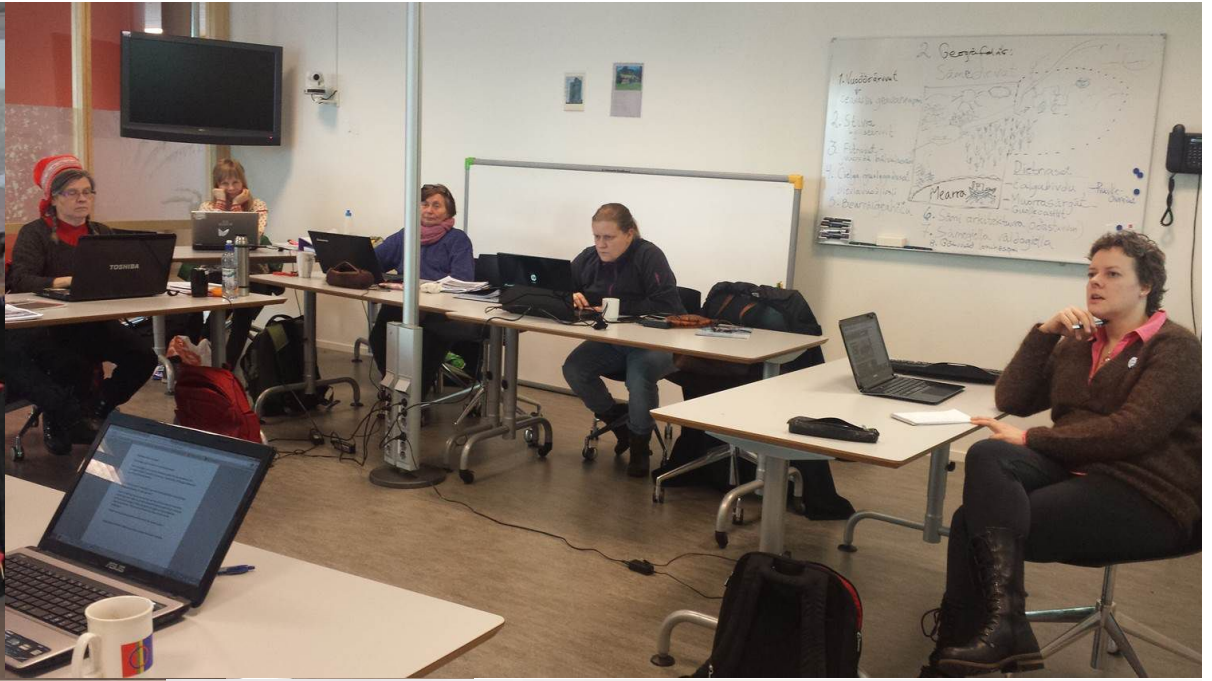
Bargoplánat

ČAKČALOHNKANBAJI PLÁNA - PLAN FOR HØSTSEMASTERET

| LEKSIJON/ PLAN-UKA | DATO | SISDOALLU/INNOLD |
|-----------------------|------------|--|
| 34 | 18.-22. 8 | Čakčalohtkanbaji alggaeapmi - start høstsemester Alggahanvahkku sierra prográmma - Oppstartstake egen program <u>Bargobihittá/Oppgave</u> |
| 37 | 8. - 11. 9 | Neahttalogadallamat Digitigiláš bokte/Nettbaserte forelesninger på Digitigiláš (Pedit) |
| 41 | 7. - 8. 10 | TEORIDJAOASSI - Teoridel Porsåggus - I Porsanger kommune Logadallamat/forelesninger |
| 44 | 28.-29.10 | METODJAOASSI - Metodeldel Gáivuonas - I Kåfjord kommune Metodakursa/metodekurs 1.fágalogga sisa |

Sámi allaskuvla/Sámi University College
Hánnoluohkká45, N-9520 Guovdageaidnu. Tel (+47) 78 44 84 00. Fax (+ 47) 78 44 84 02. E-boasta:postmottak@samiskha.no





Capacity building

Awareness and tools to discuss matters related to the nature and management of natural resources

Seminars based on themes:

- Convention on Biological Diversity
- Impact assessments
- Language as a source to TK
- Concept Analysis - concepts related to nature and livelihoods
- National Parks
- Knowledge co-production



Sámi allaskuvla
Sámi University College







Sámi allaskuvla
Sámi University College



Giitu - thank you!

For further information
about the studie and
the Árbediehtu project,
contact me on e-mail:

ravdnabme@samiskhs.no



Sámi allaskuvla
Sámi University College

