

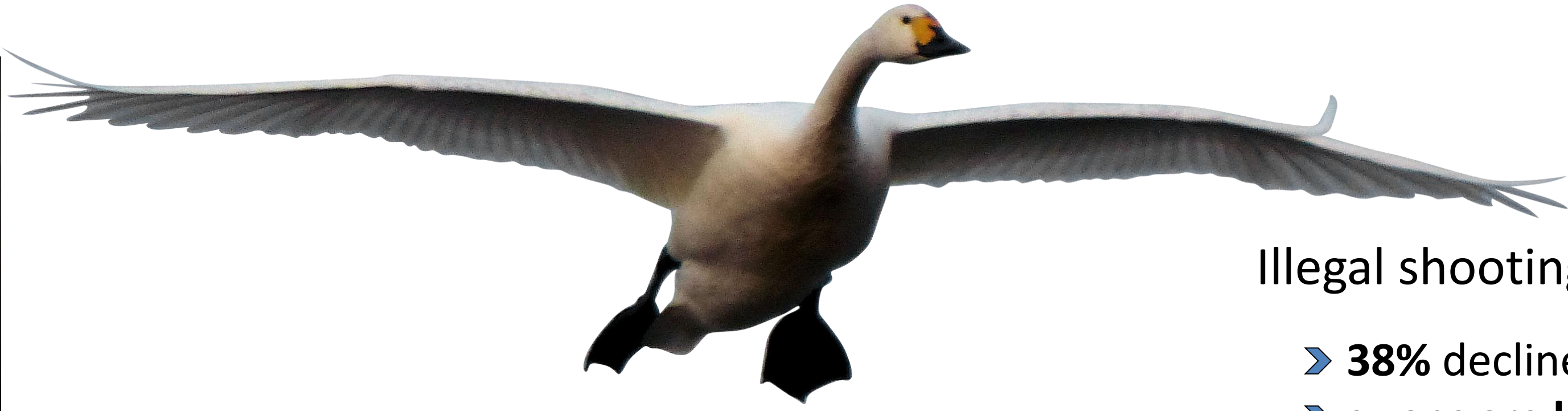
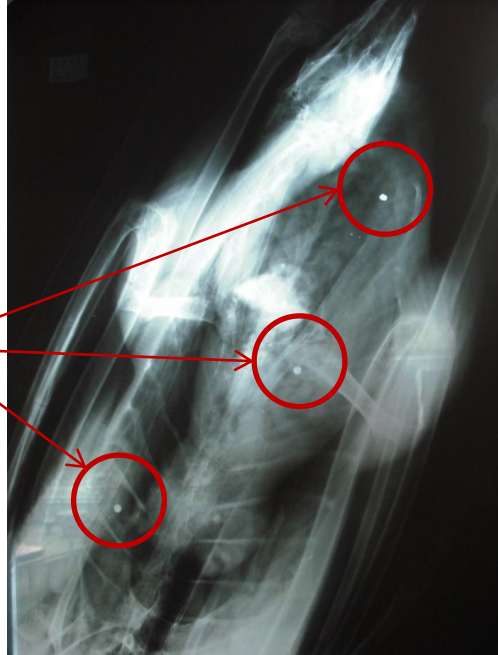
Reducing illegal shooting of Bewick's Swans in the Russian Arctic: identifying practical approaches - *Can you support this project?*

J. L. Newth^{1 2}, A. Nuno² & P. Glasov³

¹ Wildfowl & Wetlands Trust, UK; ² Centre for Ecology and Conservation, University of Exeter, UK ; ³ Institute of Geography, Russian Academy of Sciences, Moscow, Russia

The Issue: NW European population of **Bewick's Swans** (*Cygnus cygnus bewickii*) is **legally protected*** throughout its range **but** shotgun pellets found in **23%** of live **Bewick's Swans** X-rayed¹

- *1979 EU Birds Directive
- *1999 African-Eurasian Waterbird Agreement
- * Red Data book of Russia



AEWA's Bewick's Swan Action Plan:
"Illegal shooting **an important existing threat**" (Nagy et al. 2011)

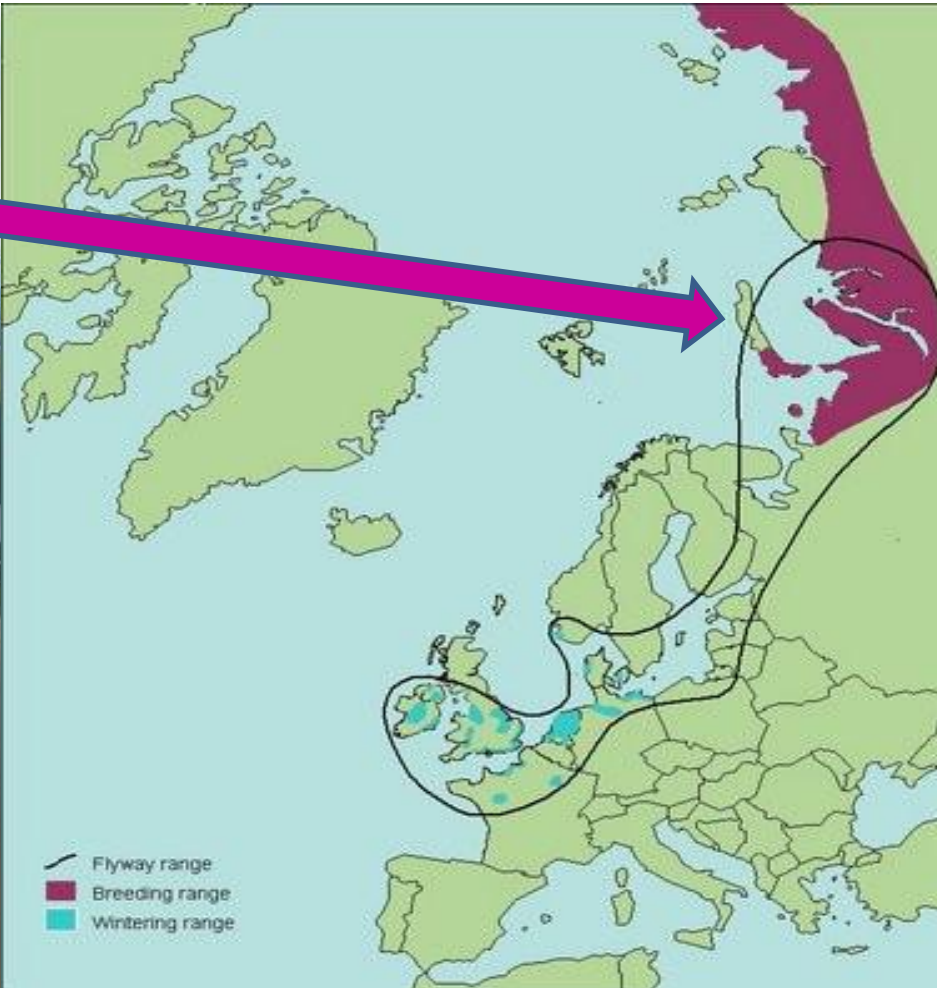
- Illegal shooting is of particular **conservation concern** for the population:
- **38%** decline in numbers between 1995-2010
 - swans are **long-lived** and **slow to mature** so **sensitive to increases in adult mortality**

Russian Arctic: a key focus area

Shooting of Bewick's Swans is known to occur in parts of the Russian Arctic, particularly during the birds' migration in May and September /October

But more information is needed from a wider range of people, particularly those living near to key swan sites that host significant numbers of birds

Hosts entire NW European population between May and October

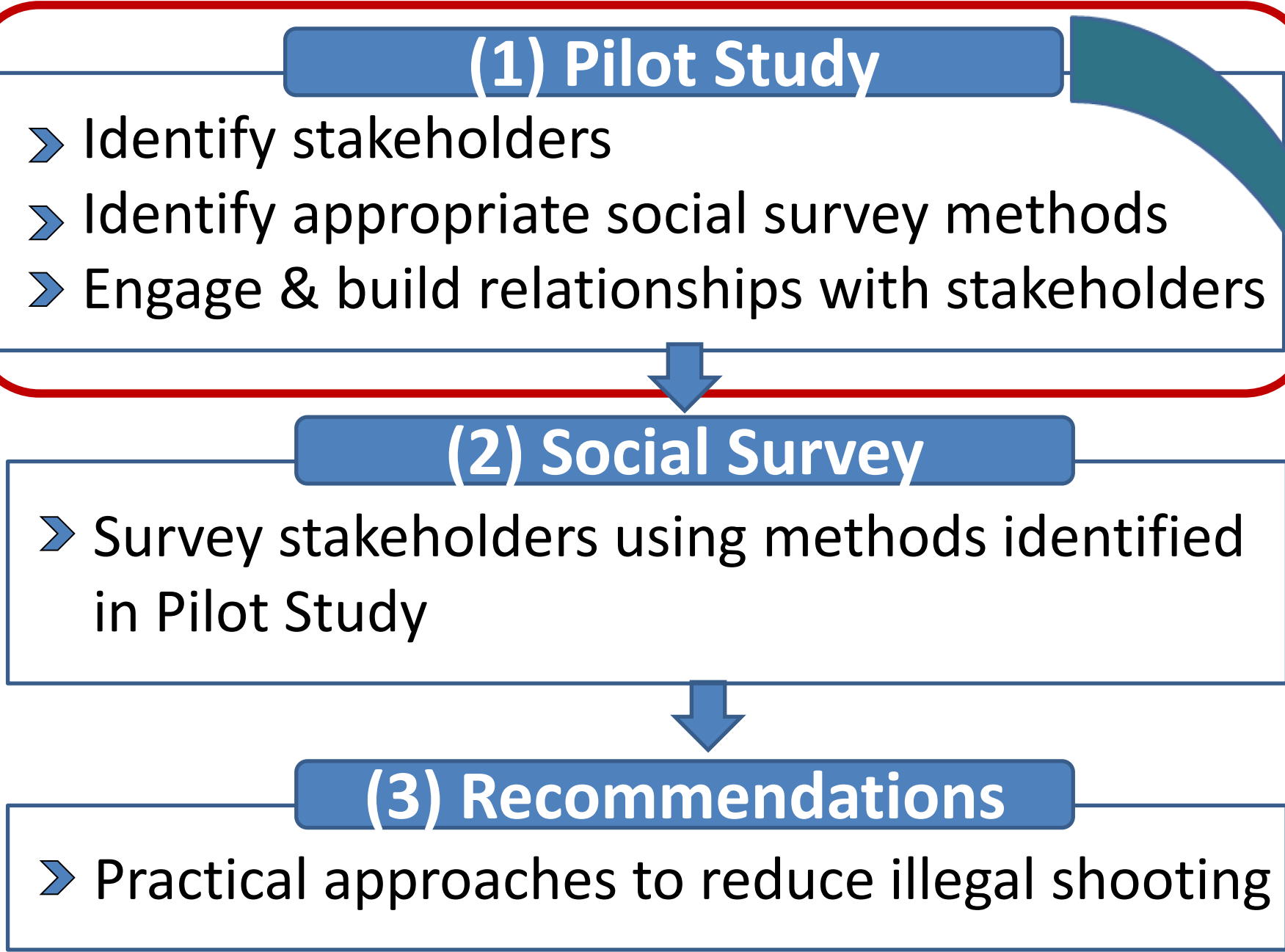
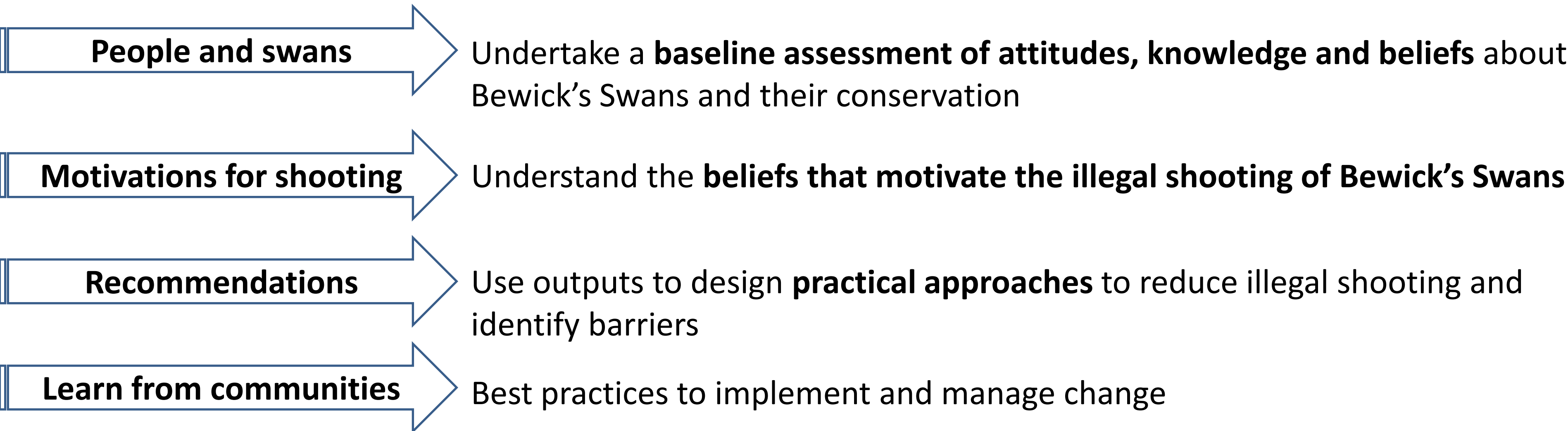


"There needs to be a paradigm shift from people as a problem to people as part of the solution"
- Bath & Frank 2011

Project Aims: identify practical approaches for reducing the illegal shooting of Bewick's

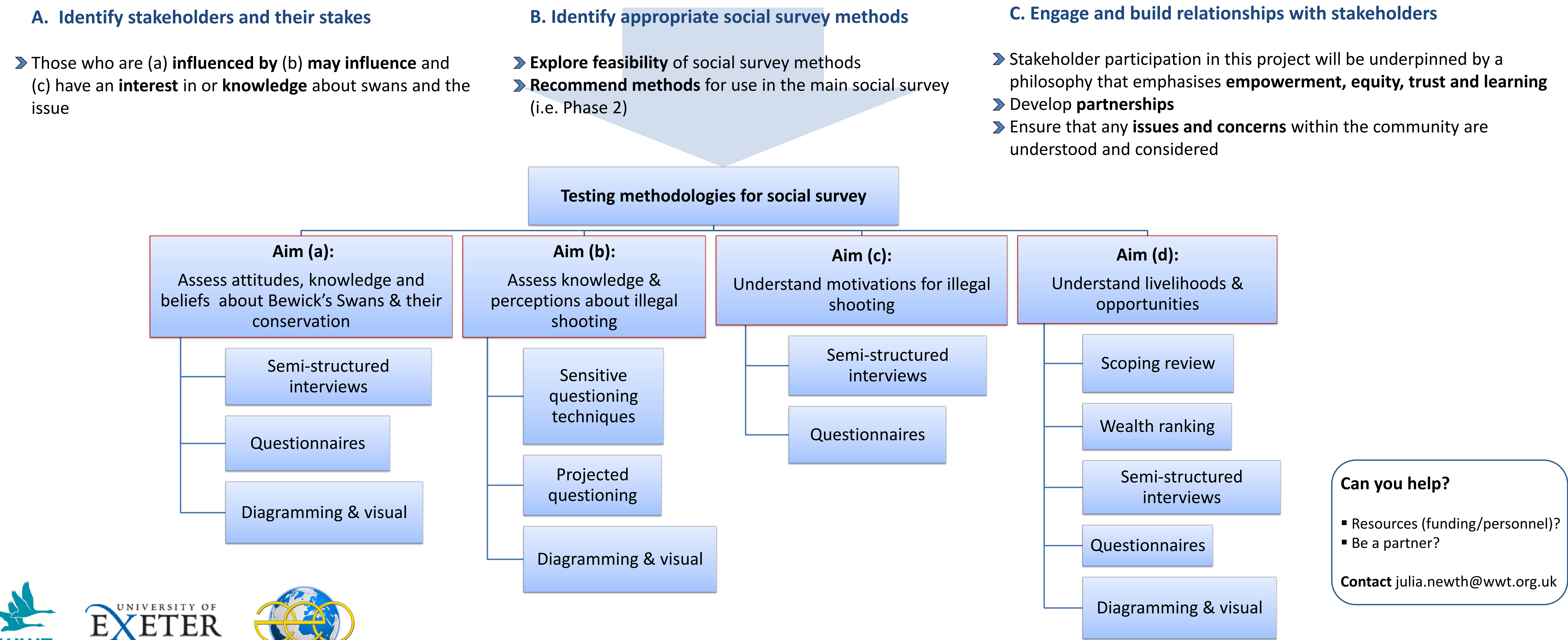
Project Phases:

Survey communities along the migration route within Russia, e.g. the White Sea regions, the Gulf of Finland and the Pechora Delta:



Pilot Study: initial scoping work with communities in NW Russian Arctic

The following motivations for the illegal shooting of swans will be explored: economic gain, food source, recreation, trophy and cultural/spiritual/traditional



¹Newth, J.L., Brown, M.J., Rees, E.C., 2011. Incidence of embedded shotgun pellets in Bewick's Swans *Cygnus columbianus bewickii* and Whooper Swans *Cygnus cygnus* wintering in the UK. *Biological Conservation* 144, 1630-1637